

Free Software! You Need This!

Hey, it's a tough economy out there. One thing you do not need is more expenses for your computer. PCC to the rescue! We're here to help!

To start the new year out right, we're going to show you the best of the best free software out there.

Jan Fagerholm and friends will show you the best of what they have found for Windows, Mac and Linux.

Everyone who uses Windows knows that it requires maintenance. What you may not know is that there are several professional grade utilities available to perform this maintenance that are free for the price of a download. The same goes for anti-malware

products. First class protection is available at no cost. Yeah, there are lots of utilities out there, but what's the good stuff? You can learn from our experience.

There is a wealth of professional grade applications available for all platforms. From office suites to graphics applications, you will find something useful here regardless of which platform you prefer.

To paraphrase the movie, whatever platform you use to thrive, drive and survive, you will see something here for you.

Come to the Main Meeting and see how to improve your computing experience. See you there!



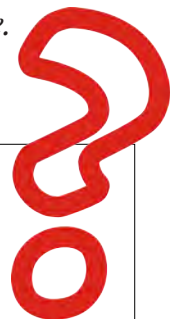
Raffle!

This month, a surprise! It's gonna be a surprise because exactly what it is is still a mystery at press time. Bring your wallet, though, as you will certainly want a chance at what will certainly be a useful and desirable item.

Tickets are \$5 each, available where you sign in. Need not be present to win.

What's Inside:

Newsletter Information	2	Map to PCC Clubhouse	3	SIG Meeting Info	9
PC Community Officers	2	Map & Directions to Main Meeting	3	Penguin Partition	9
About PC Community	2	Perfect Prints	4	Main & Exec. Meeting Minutes	10
PCC Announcements	3	Clubhouse Information	8	PCC Events Calendar	12
		Expiring Memberships	8		



PCC News is the monthly newsletter of
 PC Community (PC Clubhouse)
 P.O. Box 55513
 Hayward, CA 94545-0513

About PC Community



EDITOR
Elsie Smith
 lcms@pacbell.net

Associate Editor: Jan Fagerholm

Online Editor: Diane George

Contributors: Bayle Emlein, Jan Fagerholm, Diane George, Chuck Horner and Elsie Smith.

Deadline: Copy must be submitted no later than the second Saturday prior to the main meeting. Check the newsletter calendar for the date. Submissions should be made by e-mail to the editor, **lcms@pacbell.net**. Advertising rates are available from the editor.

Contents © 2010 PC Community, except as noted. Permission for reproduction in whole or in part is granted to other computer user groups for internal, non-profit use, provided credit is given to PC Community and to the authors of the material.



Adobe InDesign CS2 is used to publish
 PCC News

PCC Officers and Staff

- President — Chuck Horner**
 churck@comcast.net (510) 589-9677
- Executive Vice President — New VP Needed**
 you@righthere.com (510) 555-1234
- Treasurer — Tom Smith**
 smith-tf@pacbell.net (510) 545-2077
- Secretary — Bayle Emlein**
 pcc@ix.netcom.com (510) 652-1726
- VP Clubhouse — Sidney Jordan**
 sjordan321@aol.com (510) 886-8188
- VP Marketing — New VP Needed**
 you@righthere.com (510) 555-1234
- VP Membership — Jan Fagerholm**
 pcc4me@gmail.com (510) 213-8421
- VP Newsletter — Elsie Smith**
 lcms@pacbell.net (510) 545-2077
- VP Programs — New VP Needed**
 you@righthere.com (510) 555-1234
- VP Special Projects — Bayle Emlein**
 pcc@ix.netcom.com (510) 652-1726
- Webmaster — Diane George**
 digeorge@sbcglobal.net (510) 538-2449
- APCUG Representative — Diane George**
 digeorge@sbcglobal.net (510) 538-2449
- Network Coordinator — Paul Cooper**
 paulc2553@yahoo.com (510) 733-2613
- Projector Coordinator — Jan Fagerholm**
 pcc4me@gmail.com (510) 213-8421

Board of Directors

- Bayle Emlein**
 pcc@ix.netcom.com (510) 652-1726
- Jan Fagerholm**
 pcc4me@gmail.com (510) 213-8421
- Sally Holt**
 nole62@pacbell.net (510) 785-3593
- Chuck Horner**
 churck@comcast.net (510) 589-9677
- Elsie Smith**
 lcms@pacbell.net (510) 545-2077

Clubhouse Hours

The Hayward Adult School has changed its schedule, affecting the Clubhouse hours. Schedule is as follows:

Wednesdays - 4:00 PM to 7:00 PM
 Saturdays: 8:30 PM to 1:00 PM
 Clubhouse Phone # **510-537-4138**

PC Community is a computer users group for people who wish to expand their knowledge and experience of personal computers and software. This is accomplished through monthly general meetings of the full membership where major industry vendors present information, and through smaller focus groups (Special Interest Groups, or SIGs) where members meet to share common computer interests. The group's monthly Main Meeting takes place at Calvary Baptist Church, 28924 Ruus Road, Hayward, at 7:30 P.M. on the first Friday of each month.

PC Community is dedicated to community service, providing enabling technology to people with special needs, working in the community to obtain computer equipment, and working with other computer groups to help people extend their lives through computer technology.

PC Community has a Web site at **http://www.pcc.org**.

Membership dues are \$35.00 per year. \$20.00 for educational and seniors(65 and over), and \$45.00 for family per year. Call 510-213-8421 for more information, or write to PC Community at the address on this page.



ICEMAN Consulting Enterprises, Inc.

Thanks to PCC Member **Chris Yager**, ICEMAN Consulting Enterprises, Inc., for printing PCCNews.
 iceman@prado.com - (510) 317-5900



PCC is a member of the Association of Personal Computer User Groups (APCUG)

PCC Announcements

O'Reilly - Books and Media

Review a Book: Review an O'Reilly book and get published in the PCC Newsletter and on the PCC Web Site. Find a book that interests you at www.oreilly.com, e-mail me the name of the book and ISBN so I can order it for you. PCC requires a deposit from you

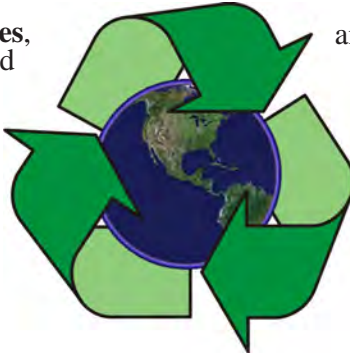


in the amount of the User Group price, a 35% discount. You have 60 days to complete the review, at which time the deposit is refunded and you keep the book.

Elsie Smith - PCC UG Representative to O'Reilly
lcms@pacbell.net or 510-545-2077

PCC Recycle Program is Back, Bigger and Better!

Your used **toner cartridges**, old **cell phones**, used **inkjet cartridges**, old **PDA's** and defunct **iPods** are valuable. Don't toss them in your trash to be used as landfill. They are worth something to PCC and other groups, either in the form of exchange or as discount on products at some local retailers. This not only helps PCC, but also helps our community. You can drop



any of these items off at our Clubhouse or at a Main Meeting. Do your part for PCC and your community! Keep the environment clean by taking a few extra moments to recycle these items with PCC.

contact:
Chuck Horner
churck@comcast.net
510-589-9677

Directions to the PCC Main Meeting

From All Directions: take 880 to the Tennyson Road exit in Hayward. Take the exit toward the hills. Proceed northeast on Tennyson Rd. about 0.7 mile to the 5th stoplight. This will be Ruus Road.

Turn right on Ruus Road and proceed southeast for about 0.4 mile. Look for Calvary Baptist Church on your left.

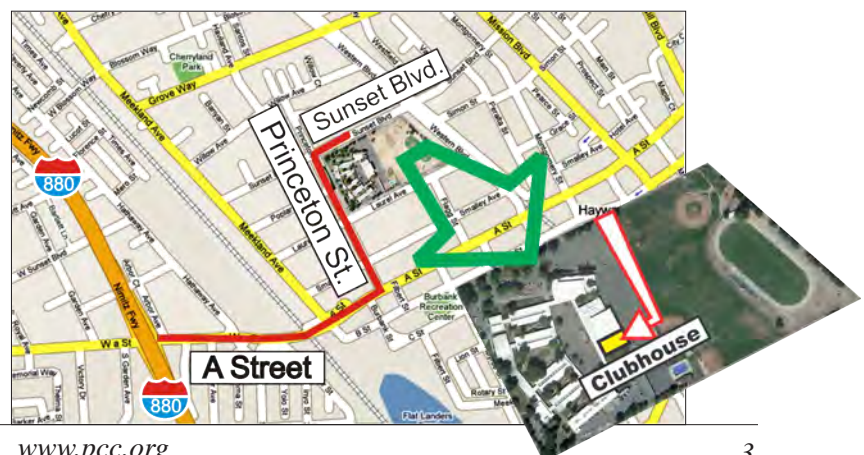
Turn left into the driveway into the parking lot. Parking is available anywhere from the driveway to the back of the lot.


Look for the PCC signs.



Directions to The PCC Clubhouse

From 880: take the A St. exit East (toward the hills). Immediately after crossing the overpass, turn left at the light onto Princeton. Go straight ahead to Sunset Ave, then turn right. After half a block, turn right into the driveway where the playing field meets the parking lot. Drive all the way back past two fences. When facing the Gym, the clubhouse entrance is on the left side.





Reprinted with permission from Smart Computing. Visit <http://www.smartcomputing.com/groups> to see what Smart Computing can do for you and your user group.

by Nathan Lake

PERFECT PRINTS

Solve Common Photo Printer Problems

Digital photography changed the way we work with photos by giving us the ability to snap photo after photo without worrying about the number of shots left in the film. In a similar change, the photo printer means that we no longer have to take our photos to a store to be developed. Whether you're a creative individual or small business owner, you can create your own professional quality prints at your convenience. Unfortunately, the self-printing capability also means that you can't get a refund if the prints turn out differently than what they looked like on your camera. Here, we'll provide solutions for the most common photo printer problems.

How Photo Printers Work

Photo printers use inkjet technology, which uses a print head with nozzles that are mere microns wide

to drop the ink onto the page. The colors are created by combining the ink colors using a given number of drops of each color to make the right shade of color. For

example, most photo printers feature a cyan, magenta, yellow, and black ink cartridge, and to make the color red, the photo printer would mix the yellow and magenta inks. If it's a dark color of red, a small amount of black dots may be added to yellow and magenta.

To create accurate and detailed prints, a photo printer will drop thousands of tiny dots of ink, and the total number of dots it can create is referred to as the maximum print resolution. For example, the Epson Stylus Photo 1400 (\$299.99; www.epson.com) offers a maximum print resolution of 5,760 x 1,440dpi (dots per inch). And because detail is defined by how small the droplets can be made, most photo printers list

a minimum ink droplet size. For example, the minimum droplet size for Canon's PIXMA MP495 (\$79.99; www.usa.canon.com) is two picoliters, which is equivalent to two trillionths of a liter of liquid.

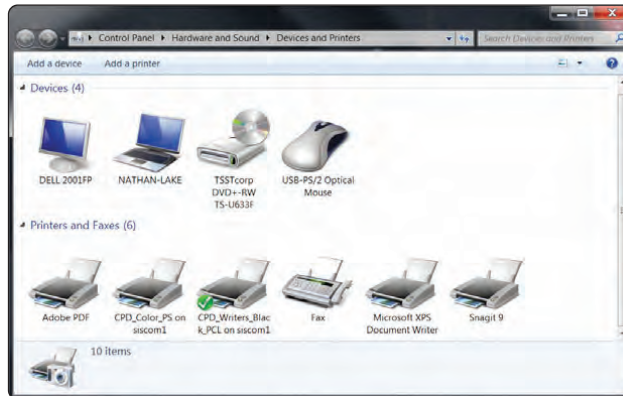
PROBLEM: Printed images contain white or single color streaks.

SOLUTION: Typically, this problem occurs when a print head, which is the component that physically drops the ink onto the photo paper, is not clean. The ink nozzles within the print head may be blocked by ink that has dried or other debris, such as dust. Another possibility is that you're printing on the wrong side of the photo paper, which has a printing and non-printing side. If you placed the paper upside down in the tray, the ink won't absorb properly on the non printing side and cause the streaking on the page.

Most recent photo printers have a built-in function to clean the print head. For example, you can clean the print head on many Epson printers in Windows 7 by clicking the Start button, selecting Devices And Printers, and double-clicking your Epson printer. Depending on your model of printer, you may need to right-click it and select Printing Properties or Preferences. Next, select the Utility tab and click the Head Cleaning button. Or alternatively, you could hold down the ink button (it features a raindrop icon) on the Epson printer for three seconds. Cleaning takes around two minutes, and the green power light will flash when the process is finished.

If the printer's self-cleaning capabilities don't fix the problem, you can manually clean the ink cartridges to ensure that the ink is properly

flowing to the print head. Turn the printer on and lift the top cover. Wait for the ink cartridges to move to the center of the printer and then unplug the power cord. To help you remove the ink cartridges, printer vendors generally place a sticker with instructions on the inside of the printer or on top of the print head, but you'll



You can access your printer's preferences in Windows 7 by opening the Devices And Printers menu.

also find the cartridge removal tips in your owner's manual. Once you've removed a cartridge, place it on a piece of paper or rag, so that none of the ink spills on your furniture. Then, use a lint-free cloth, or a coffee filter, that's been slightly dampened with water to clean the copper-colored circuitry contacts. Finally, use a lint-free cloth to remove any of the remaining moisture.

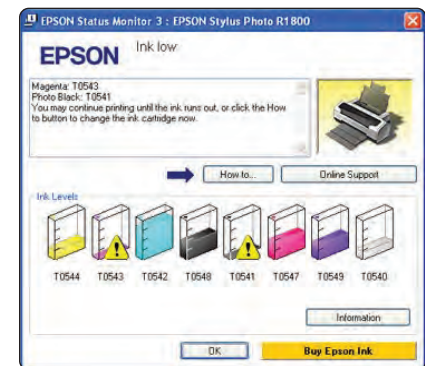
PROBLEM: Black-and-white or gray-scale images print with a greenish blue or reddish cast.

SOLUTION: Some printers or image-editing applications feature automatic color correction software that automatically fixes color issues with your photos. But when it comes to gray-scale prints, the software may add color back into the images. To fix the issue, you can turn off the automatic color feature in the printer's driver or inside the image-editing utility. For

example, you could change the Canon Pro9000 default settings in Windows 7 by clicking the Start button, selecting Devices And Printers, right-clicking the Canon Pro9000 printer, and choosing Printing Preferences. Next, click the Main tab and select Manual in the Color Adjustment field and click Set. In the Manual Color Adjustment window, click the Matching tab and select None in the Color Correction field, so that the printer no longer corrects colors.

Another possible problem is that the printer has not been set up with the correct color balance. If you have an HP printer with the HP Photo Printer Toolbox, for example, you can configure the printer for a color balance that suits your needs. For instance, you'd open the HP Photo Toolbox, select the Maintenance tab, and

click Correct The Color Balance (Tint). You can follow the instructions in the Color Balance window, which features a picture with



Epson's Status Monitor utility will inform you when the printer's ink cartridges are running low.

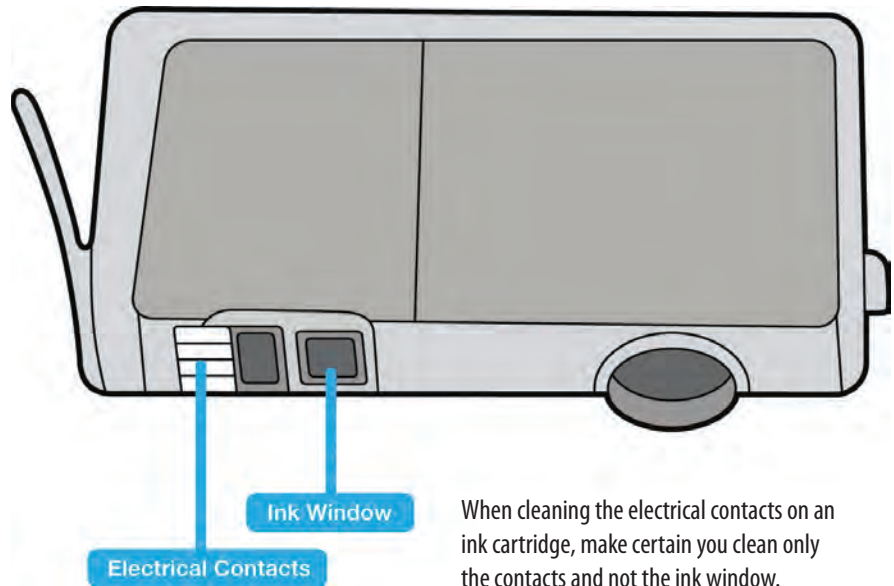
different tints of color, to make certain your printer is configured to produce the appropriate colors.

PROBLEM: When you turn on your PC, it delivers a low ink message.

Continued on page 6

SOLUTION: Most photo printers include built-in ink monitoring capabilities to let you know when an ink cartridge is low, so you know to buy a replacement before the current cartridge runs out. And when you install the software included with your photo printer, the printer will relate any low ink information to your PC. Generally, you can continue to print for a short period of time after you see the message, but because the printer must mix a combination of all the ink colors when it's printing photos, it's best if you invest in a replacement right away.

To see how much ink is remaining, you can generally open the printer's Preferences to see a visual representation of how much ink remains in the cartridge. For example, to check the ink levels on a Canon printer in Windows 7, you can click the Start menu and select Devices And Printers. Right-click your printer, choose Printing Preferences, and click View Printer Status on the Maintenance tab to view how much ink remains in each cartridge.



When cleaning the electrical contacts on an ink cartridge, make certain you clean only the contacts and not the ink window.

PROBLEM: There is an ink failure error message or a blinking light next to an ink symbol on the printer's control panel.

SOLUTION: First, open up the printer and check that the cartridges have been locked into place by the cartridge access door. Next, open up the access door and double-check that the cartridges are all installed into

the correct slots. If they are, it's a good idea to run your finger across all the cartridges to see if any of them are sticking up higher than the rest. Cartridges that have not been snapped into place should be removed and reinstalled. Typically, ink cartridges feature tabs that will snap into place when the cartridge is all the way into the slot. Once you're sure that all the cartridges are secure, close the carriage access door or latch the cartridges in place.

If you're still experiencing the ink failure errors, you should clean the electrical contacts with a lint-free cloth. The contacts on an ink cartridge are typically located on the base near the tab that locks the cartridge into the slot. Once you've removed all the print cartridges, we suggest you also wipe down the electrical contacts on the print head. You may also want to try following the instructions in the "Printed images contain white or single color streaks" problem to let the printer clean the print heads.

PROBLEM: You removed your ink cartridge because the printer said it was out of ink, but you can still see ink in the cartridge. Does it really need to be replaced?

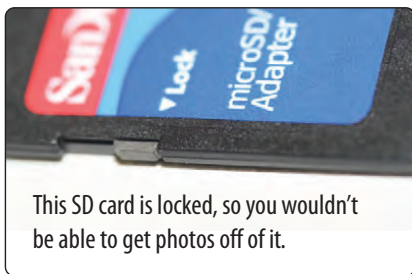
TOP PROBLEM

PROBLEM: The colors in the image on my monitor are different than the results of my prints.

SOLUTION: Many photo printers allow you to perform a color adjustment, so that your photos look like the image on your monitor. For example, the color for most Epson printers can be managed in the printer's Preferences window. To make a change, select the Print option in whichever image-editing application you use. Select your Epson printer and click the Preferences or Properties button. Epson suggests that you choose Best Photo (in the Quality Option section) and select the paper you're printing on for optimal results. Next, select Advanced Settings (or similar) and click the Color Controls radio button. From options below the radio buttons, you can make adjustments to the brightness, contrast, and saturation, as well as the levels of cyan, magenta, and yellow. You'll find similar color control options for printers from other vendors.



SOLUTION: Typically, there's a small amount of ink left over when the printer indicates the cartridge is empty, and it's likely that the printer can't access the residual ink at the bottom of the cartridge. Ink cartridge vendors know this and base the estimated prints off the ink the printer can actually use. If a large amount of the ink appears to be left over, it's possible that the cartridge's nozzle is plugged up with dry ink.



Follow the instructions in the third paragraph of the “Printed images contain white or single color streaks” problem to clean the cartridge.

An out-of-ink error may also occur when you haven't properly installed an ink cartridge, or maybe you haven't completely pulled off all the packing and tape from a new ink cartridge. Follow the instructions in the owner's manual or on the sticker inside the printer to make sure your ink cartridges are correctly installed.

PROBLEM: The memory card you are trying to print photos from is not recognized.

SOLUTION: First, check that the memory card's lock switch is in the unlocked position. On an SD (Secure Digital) card, the lock is almost always located on the left-hand side of the card. Just slide the switch in the other direction. In some cases, the switch may be broken, and if so, you can attach a small piece of tape over the gap where the slider would be. Note that this is only a stopgap solution, because the tape could come off

inside your card reader, so it's a good idea to copy all your photos off of the memory card to your PC and replace the broken card.

If the memory card doesn't appear to be locked, examine it for other signs of trouble, including missing contacts at the bottom of the card, discoloration from extreme heat, or scratches on the contacts. You may also want to examine your photo printer's owner's manual to make certain that it supports the memory card you're trying to insert.

PROBLEM: Printer cartridge alignment fails and prints look off.

SOLUTION: To do a proper alignment, make sure that the paper loaded in the tray is plain white and unused. It's also important that the paper have a brightness level above 85—most multipurpose bond paper for copy machines and desktop printers feature brightness levels in the upper 80s. Next, you'll need to make sure that the paper is the correct size for the printer. For most photo printers, that means you'll need to use a letter-sized page. By correctly aligning the printer, the quality of your prints should improve.

PROBLEM: My photo printer isn't producing borderless prints.

SOLUTION: Check whether your paper settings match the paper size. Open your printer's preferences and locate the paper size or page options setting. You may also need to place a check mark in the borderless printing checkbox, if one is available. Most photo printer's preferences also offer an orientation radio box for Portrait and Landscape, and you should make sure that you have selected the option that matches your image.

PROBLEM: The photo printer feeds multiple pages of photo paper at the same time.

SOLUTION: Photo paper has a tendency to stick together more than multipurpose copy paper, because the glossy finish can become tacky. Thus, when you're printing photos, it's best to insert only one piece of photo paper at a time, or at least fan both sides of the photo paper stack before printing. The photo printer may also have trouble grabbing a single sheet if you've inserted too much paper in the tray, so it's a good idea to at least limit the stack to 10 pages or fewer.

PROBLEM: My photo paper is bowed and the margins are off when it comes out of the printer.

SOLUTION: It's likely that the printer paper was stored in a humid or hot room, or it was stored on its side, rather than placed flat on a shelf. Photo paper is sensitive to humidity



Fan your photo paper before using it so that the printer doesn't grab multiple sheets at a time.

and can curl or bow in extreme conditions. The effects of humidity will become more pronounced if you don't store your photo paper flat, or on a flat surface, because the paper will be more likely to bow under pressure. ■

Door Prizes

Congratulations to all the members who won door prizes at the Main Meeting!

General Drawing:

Battery upsizer	Richard Server
Battery upsizer	Joy Somerwill
Fuze ipod/phone case	Andrew Tews
Fuze ipod/phone case	Bud Gallagher
Inland headset	Dan Peterson
Pepcom bag	Sally Holt
CES bag	John Cordeniz
CES bag	Chris Yager
Build a Program in Visual Basic	Bob Rofen

Raffle Prize:

ColorPix Digital Video Camera	Chuck Horner
-------------------------------------	--------------

Clubhouse Information

Due to the change in the Hayward Adult School (HAS) Custodian hours, the Clubhouse will remain open from 4:00 PM to 7:00 PM on **Wednesday Evenings**.

On **Saturdays** the Clubhouse will now open at 8:30 AM and close at 1:00 PM. When Hayward Adult School has a three-day weekend, the Clubhouse will be **closed**.

The monthly **"Cook Outs"** will be held on the first open Saturday of each month.

Clubhouse Phone Number is 510-537-4138. Anyone who needs to contact the Clubhouse may do so during the above listed hours when someone is there to take the call.

Check this section of the Newsletter for any future changes or information regarding the Clubhouse, or check PCC's Web site at www.pcc.org.

Door Prize Donations

O'Reilly Media generously donates the books that are our door prizes. Go to www.oreilly.com and pick books you'd like to see on our door prize table. You might win one you choose. E-mail the names and ISBN of the books you want me to request from O'Reilly.

Elsie Smith
lcms@pacbell.net

Hey You! Join PCC!

If you're reading this newsletter because it was passed on to you by a friend, you're getting an idea of what a great group this is. Why not join PCC and get more from your computer? Apply at www.pcc.org or contact:

Jan Fagerholm
pcc4me@gmail.com
510-213-8421

Membership Dues

As of January 1, 2007, the following changes went into effect:

Regular.....	\$35.00
Family (same household).....	\$45.00
Educational, Seniors.....	\$20.00
Corporate (maximum 5 memberships).....	\$100.00

Remember, you can always pay your dues by mail. Make a check payable to PC Community in the amount listed above to:

PC Community
P.O. Box 55513
Hayward, CA 94545-0513

Dues Expiring This Month!

The following members dues expire this month:

Paul Cooper	Steve Ryken
Charles Dumm	Anita Schmidt
Bob Dunn	Laura Simpson
Ravello Montanez	Carl Webb
James Rogers	

Special Interest Group Meetings



Genealogy

Carl Webb - (510) 351-3335
cwebb531@aol.com
Third Tuesday of the month: 6:30pm



Del Parton - (510) 276-4292
delpa@pacbell.net
Saturday after Main Meeting: 8pm



Jan Fagerholm - (510) 213-8421
pcc4me@gmail.com
Last Saturday of the Month: 2pm



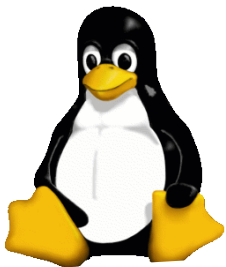
Dan Dolgin - (510) 895-8845
dandolgin7@comcast.net
3rd Monday of the month: 7:30pm
<http://www.pcc.org/mobile>



Chuck Horner - (510) 589-9677
churck@comcast.net
3rd Monday of the month: 7:30pm
<http://www.pcc.org/mobile>



Bud Gallagher - (510) 269-3623
budgall@comcast.net
2nd Saturday of the month: 1pm



The Penguin Partition Linux for Human Beings

by Jan Fagerholm, PCC Penguinista

Open source, as a model and as software, continues to make inroads in places that affects us all. Of course Linux is one of the better known results of open source, but there are many projects that you might

never see but that you use in your everyday user life, even if you only use Windows or Macs.

There's the long-touted fact that the majority of Web servers (that's the software that sends you Web pages when you go to a Web site) run on Apache, the open source Web server. Apache runs on Linux and its variants. Google, the leading search site, runs on 100 percent Linux. (Bing, the search engine from that other computer company, has settled in at 10 percent usage.)

The list has become way too long to even paraphrase here, so I'll just refer to the recent Gartner report that finds that 85 percent of all companies use open source software of some kind. This ranges from Linux and Apache, the world's dominant Internet combination to user software, including the OpenOffice suite and Firefox and Chromium Web browsers. IBM has used Linux on most of its high-end computer products for several years. The new Lotus Symphony, IBM's office suite, is based on OpenOffice 3.

I concentrate on the desktop/user end of things, so I find the mix of open source and proprietary software produces some frustrating shortcomings on my preferred platform, Linux. eBay, which runs on IBM/Linux and Sun/Solaris leaves Linux users out in the cold with its recent "Sell

Your Item" software. Netflix, which proudly lists the open source software that it uses does not have a Linux client for its streaming video. However, Hulu has a Linux client for its streaming video that is identical to its Windows counterpart. (Hulu provides the streaming video services for IMDB and many others.)



Cloud Computing is hot right now, but consumer based Internet access is too slow and too unreliable to trust applications and data on the Cloud somewhere. I find the "3G network using mobile phone as modem" option too slow and too expensive to be practical: the annual price for the service is equal to the price of a good laptop. Smartphones (Android, iPhone, et al) are too small to accomplish real work. The iPad might work, but the 3G service will equal the price of the device in a year's time.

Some day. . .

OK, at the end of this rant, I'll just say that I do 80 percent of what I do in Linux. I presently use OpenOffice for writing, spreadsheets, presentations and the like, The GIMP for bitmap editing (e.g. photographs), OpenShot for producing simple slideshows, and Kdenlive for more involved video editing. So far, there is no serious Linux equivalent for Adobe InDesign, CorelDRAW, or the excellent iMovie on the Apple platform.

But Linux is gaining traction. I am confident they will come.



PCC Main and Executive Meeting Highlights

Secretary — Bayle Emlein
pcc@ix.netcom.com

Treasurer — Tom Smith
smith-tf@pacbell.net

Main Meeting Highlights

December 3, 2010

The meeting was called to order at 7:52 PM by President Chuck Horner. He explained Internet access and welcomed several first-time attendees.

Jan Fagerholm explained the procedure for voting for the Board of Directors, which will choose the officers of the Executive Committee. There were no new nominations and nominations were closed. Ballots were distributed. After each member present voted, ballots were collected.

SIG Announcements:

The Mobile SIG is on sabbatical until January.

The Windows 7 SIG will meet at Bud's house on the 11th (the second Saturday) at 1:00 PM.

The Spectacular Linux SIG will move from the last Saturday of the month because of the holidays. Stay tuned for details, as there are plenty of new releases to discuss as well as the continuing saga of Verne Perry's project.

The Hardware SIG will meet tomorrow (the Saturday after the Main Meeting) at 8:00 PM at the Smith's.

Other Announcements:

We need someone to help manage presentations. It's not nearly as hard as you might imagine. Contact Jan for more information.

Bud Gallagher noted that HP is dropping Windows Home Server. Microsoft has been having problems with drive extenders.

Presentation:

A team working together is greater than the sum of its parts. Chuck introduced Dr. David P. Anderson of BOINC. The purpose of BOINC is to increase the usage of volunteer computing to meet the scientific need for high-throughput computing. Scientific computing reaches a point where one computer cannot do the job. One type of supercomputing solution involves rewriting the process so that the job runs faster. Another kind of solution distributes the work over many computers and is more effective where speed is not

so important but a large number of FLOPS (Floating-point Operations Per Second) are needed, as in climate modeling.

Volunteer computing has been around since 1995. SETI@Home launched in 1999. BOINC is a general-purpose middle-ware program for volunteer computing, allowing for automatic updates.

BOINC lets users select when their computer will participate, how much of their computer's resources will be devoted to the projects, and which projects they will participate in. The general public learns more about science, scientists are encouraged to improve their research as well as their efforts to educate the public. Currently about 500,000 people participate in BOINC. The equivalent supercomputer would cost \$400,000. The industry is about 10 years away from developing a single exaFLOP computer with equivalent computing power.

BOINC has projects in the fields of biology, medicine, physics, astronomy, environment, and mathematics. Developed by Carl Christianson, climateprediction.net is based at Oxford University runs climate simulations. The purpose of Einstein@home is to analyze data that would demonstrate gravitational waves. SETI@home is also looking for a sine wave against a background of noise; the range of possible variations is computationally intensive. Milkyway@home is analyzes data to improve the mapping of the Milky Way, including dark matter. GPUGRID.net maps proteins. AQUA@home is operated by D-Wave Systems, a Canadian company, to develop a quantum computer. Quake Catcher Network is a distributed seismograph. Carl developed Quaker Catcher, also. Fortunately he's at the meeting and can be asked director about both climateprediction and Quake Catcher.

BOINC uses strong security encoding. BOINC is divided into 2 parts: the operations used by scientists and the user interface. BOINC offers a screensaver composed of graphics applications from various projects. Project communications are run through http operations. Users can compile their own applications. Some users may wish to adapt an application to optimize if for their particular system, including non-standard operating systems. GridRepublic and BAM automate the process of joining

Continued on page 11

Main Meeting Highlights

Continued from page 10

a project or changing your attachment.

BOINC is currently working on developing virtual machine operations. The open-source Virtual Box interfaces with many platforms. A virtual machine reduces security exposure. BOINC uses strong security encoding. Also on the horizon are umbrella projects, such as the IBM World Computing Grid, that coordinate the computing power and scientific projects. Dr. Anderson has a long-range goal of a combined model that would be directed by an agency such as NSF.

Volunteer computing has economic advantages over other forms of high-throughput computing and has the secondary advantage of increasing public awareness of scientific activities. As mobile devices grow in power, their resources will be tapped.

Several companies have tried a paid model of distributed computing. These have not been successful because the companies, such as pharmaceuticals, that would fund this kind of project employ proprietary data that they do not want to download to volunteer computers.

The motivations of volunteers have been studied. One set of motivations revolve around the desire to support a scientific venture. Another group is competitive about the power of the computers they bring to the projects and the credits they earn.

Announcements after the break:

There was a tie for the 5th Board of Directors position. A run-off was conducted between Sally Holt and Michael Wong.

Question for the Experts: What kind of security software do I need with Linux? Answer: you don't. It's built in.

Congratulations to the 2011 PCC Board of Directors: Sally Holt, Jan Fagerholm, Chuck Horner, Elsie Smith, Bayle Emlein.

The meeting was adjourned at 10:04 PM.

The next meeting will take place at the same location on January 7, 2011.

Respectfully submitted,
Bayle Emlein, Secretary

Executive Committee Meeting Highlights

There was no EC Meeting in December. PC Community business was conducted by way of e-mail

Old Business: Chuck will find someone to work on the tri-fold brochure and business cards.

President's Report - Chuck Horner: No report.

Executive Vice President - Position open.

Treasurer - Tom Smith - As of December 31, 2010:

Checking Account	\$2,077.00
CD	\$3,370.00
Total	\$5,440.00

Secretary - Bayle Emlein: No report.

VP Clubhouse - Sid Jordan: No report.

VP Marketing - Position open.

VP Membership - Jan Fagerholm: Member count as of year-end:

Type	Number	Percent
Regular	44	51.76
Senior	35	41.18
Student	1	1.18
Associate	5	5.88
Total	88	

VP Newsletter - Elsie Smith: Submission deadlines:

December 18, 2010, Saturday midnight, January, 2011

January 22, 2011, Saturday midnight: February, 2011

February 19, 2011, Saturday midnight: March, 2011

VP Programs - Position open.

January: Member presentation.

February: Suggestions open for presentation.

VP Special Projects - Bayle Emlein: No report.

Webmaster - Diane George: No report.

Calendar - See the Web site for the latest updates and changes in SIG meetings. Remember to check the Web site before going to the Clubhouse on a Saturday.

Fund Raiser:

January, 2011: Stay tuned.

New Business:

Congratulations to the 2011 PCC Board of Directors: Sally Holt, Jan Fagerholm, Chuck Horner, Elsie Smith, Bayle Emlein.

Volunteers are needed for the following positions for 2011: **Executive Vice President, VP Marketing and VP Programs.** Your help is needed. Contact a Board of Directors member to learn what needs to be done and how you can help.

Date and Time of Next Meeting: Saturday, January 22, 2011 at 2:00 PM, 28924 Ruus Road, Hayward.

PC Community
 P.O. Box 55513
 Hayward, CA 94545-0513



A World Of Good Wishes

January 2011

Sunday	Monday	Tuesday	Wednesday	Thursday	Friday	Saturday
Check the calendar at www.pcc.org for up-to-date information!			See Page 8 for Clubhouse information.	See Page 9 for SIG Meeting information.	→ Clubhouse Closed 1 New Year's Day	
2	3	4	5	6	7 7:30 pm Main Meeting	8 → 8:30am-1pm Clubhouse Open → Clubhouse Cookout 1 pm-Windows 7 SIG 8 pm-Hardware SIG
9	10	11	12	13	14	15 → 8:30am-1pm Clubhouse Open
16	17 7:30 pm- Mobile Computing SIG	18 6:30 pm- Genealogy SIG	19	20	21	22 → 8:30am-1pm Clubhouse Open 2 pm-Exec. Committee Mtg.
23	24	25	26	27	28	29 → 8:30am-1pm Clubhouse Open 2 pm-Linux SIG
30	31	→ 4 pm-7 pm Clubhouse Open				

The February 2011 Main Meeting will be at 28924 Ruus Road, Hayward CA, on February 4, 2011 at 7:30 P.M.