

Ultrabooks, New Desktops, and Cool Android Apps

This month, a trio of interesting computers, coming in all sizes.

Diane George will illustrate Ultrabooks, a new PC category from Intel. Ultrabooks is a brand PC makers can use if they meet Intel's criteria: they have to be thinner than a finger; run five to eight hours on a battery charge; use Intel's latest mobile processors; and have a solid-state hard drive, or SSD.



Reading about Windows 8? You can sample most of these features now on recent Linux distributions. Jan Fagerholm will demonstrate one such example, Linux Mint 12, running the new GNOME 3 desktop that incorporates these features. Usability is a prime feature of Mint, and it stands out in the new desktop.



On the Android App front, Chuck Horner will show off an Android app he uses as an informal

database that incorporates text, images, and other media that allows you to sort and cross reference data in many forms that can be used in data mining. And, it runs on a Smartphone.

Expand your computer world. Come to the December Main Meeting!



PCC Elections!

It's that time of year! Come to the Main Meeting and cast your vote for the Board of Directors. Nominations have been open all month, but there is still time to nominate your favorite PCCer for the Board elections. Nominations are still open as you read this, and you may nominate someone by going to www.pcc.org and e-mailing the Executive Committee with your nomination, or show up at the Main Meeting and make your nomination there. Don't be shy - nominate yourself! Get involved and make PCC better for it.



Raffle!

This month, a K100™ BLUETOOTH® IN-CAR SPEAKERPHONE. The Plantronics K100 in-car speakerphone is the hands-free solution that stays in your car. Large, easy-to-locate buttons make it easy to use, and dual-mics plus DSP deliver Plantronics signature sound quality. Talk hands-free. Drive hands-on. Specifications: Two noise-reducing microphones - High-quality speaker - Large button controls and mute button - Voice alerts for easier control and set-up with Bluetooth phones - A2DP to stream music, podcasts, GPS and more - FM transmitter. And, it's YOURS for the price of a raffle ticket!

Tickets are **\$5** each, available where you sign in. Need not be present to win.

What's Inside:

Newsletter Information..... 2	Map & Directions to Main Meeting..... 3	SIG Meetings- Information..... 9
PC Community Officers..... 2	PCC Clubhouse 3	Penguin Partition..... 9
About PC Community 2	News From The Help Desk..... 4	Main & Exec. Meeting Minutes.....10
PCC Announcements..... 3	Smart Computing Quick Tips..... 6	PCC Events Calendar.....12
	Advertisements..... 8	

About PC Community



EDITOR
Elsie Smith
 lcms@pacbell.net

Associate Editor: Jan Fagerholm

Online Editor: Diane George

Contributors: Bayle Emlein, Jan Fagerholm, Diane George, Chuck Horner and Elsie Smith.

Deadline: Copy must be submitted no later than the second Saturday prior to the Main Meeting. Check the Newsletter calendar for the date. Submissions should be made by e-mail to the Editor, **lcms@pacbell.net**. Advertising rates are available from the Editor.

Contents © 2011 PC Community, except as noted. Permission for reproduction in whole or in part is granted to other computer user groups for internal, non-profit use, provided credit is given to PC Community and to the authors of the material.



Adobe InDesign CS2 is used to publish
 PCC News

PCC Officers and Staff

President — Chuck Horner	
<i>churck@comcast.net</i>	(510) 589-9677
Executive Vice President — Sally Holt	
<i>nole62@pacbell.net</i>	(510) 785-3593
Treasurer — Tom Smith	
<i>smith-tf@pacbell.net</i>	(510) 545-2077
Secretary — Bayle Emlein	
<i>pcc@ix.netcom.com</i>	(510) 652-1726
VP Clubhouse — Sidney Jordan	
<i>sjordan321@aol.com</i>	(510) 886-8188
VP Marketing — New VP Needed	
<i>you@righthere.com</i>	(510) 123-4567
VP Membership — Jan Fagerholm	
<i>pcc4me@gmail.com</i>	(510) 213-8421
VP Newsletter — Elsie Smith	
<i>lcms@pacbell.net</i>	(510) 545-2077
VP Programs — New VP Needed	
<i>you@righthere.com</i>	(510) 123-4567
VP Special Projects — Bayle Emlein	
<i>pcc@ix.netcom.com</i>	(510) 652-1726
Webmaster — Diane George	
<i>digeorge@sbcglobal.net</i>	(510) 538-2449
APCUG Representative — Diane George	
<i>digeorge@sbcglobal.net</i>	(510) 538-2449
Network Coordinator — Paul Cooper	
<i>paulc2553@yahoo.com</i>	(510) 733-2613
Projector Coordinator — Jan Fagerholm	
<i>pcc4me@gmail.com</i>	(510) 213-8421

Board of Directors

Bayle Emlein	
<i>pcc@ix.netcom.com</i>	(510) 652-1726
Jan Fagerholm	
<i>pcc4me@gmail.com</i>	(510) 213-8421
Sally Holt	
<i>nole62@pacbell.net</i>	(510) 785-3593
Chuck Horner	
<i>churck@comcast.net</i>	(510) 589-9677
Elsie Smith	
<i>lcms@pacbell.net</i>	(510) 545-2077

Clubhouse Information

Please check page 3 for information regarding the Clubhouse. Communication with the Clubhouse should be directed to PC Community, P.O. Box 55513, Hayward, CA 94545-0512.

PC Community is a computer users group for people who wish to expand their knowledge and experience of personal computers and software. This is accomplished through monthly general meetings of the full membership where major industry vendors present information, and through smaller focus groups (Special Interest Groups, or SIGs) where members meet to share common computer interests. The group's monthly Main Meeting takes place at Calvary Baptist Church, 28924 Ruus Road, Hayward, at 7:30 P.M. on the first Friday of each month.

PC Community is dedicated to community service, providing enabling technology to people with special needs, working in the community to obtain computer equipment, and working with other computer groups to help people extend their lives through computer technology.

PC Community has a Web site at <http://www.pcc.org>.

Membership dues are \$35.00 per year. \$20.00 for educational and seniors(65 and over), and \$45.00 for family per year. Call 510-213-8421 for more information, or write to PC Community at the address on this page.



**ICEMAN
 Consulting
 Enterprises,
 Inc.**

Thanks to PCC Member *Chris Yager*,
 ICEMAN Consulting Enterprises, Inc.,
 for printing PCCNews.
 iceman@prado.com - (510) 317-5900



PCC is a member of the Association
 of Personal Computer User Groups
 (APCUG)

PCC Announcements

O'Reilly - Books and Media

Review a Book: Review an O'Reilly book and get published in the PCC Newsletter and on the PCC Web Site. Find a book that interests you at www.oreilly.com, e-mail me the name of the book and ISBN so I can order it for you. PCC requires a deposit from you

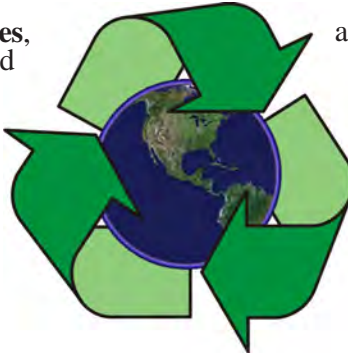


in the amount of the User Group price, a 35% discount. You have 60 days to complete the review, at which time the deposit is refunded and you keep the book.

Elsie Smith - PCC UG Representative to O'Reilly
lcms@pacbell.net or 510-545-2077

PCC Recycle Program is Back, Bigger and Better!

Your used **toner cartridges**, old **cell phones**, used **inkjet cartridges**, old **PDA's** and defunct **iPods** are valuable. Don't toss them in your trash to be used as landfill. They are worth something to PCC and other groups, either in the form of exchange or as discount on products at some local retailers. This not only helps PCC, but also helps our community. You can drop



any of these items off at a Main Meeting or an EC Meeting. Do your part for PCC and your community! Keep the environment clean by taking a few extra moments to recycle these items with PCC.

contact:
Chuck Horner
churchk@comcast.net
510-589-9677

Directions to the PCC Main Meeting

From All Directions: take 880 to the Tennyson Road exit in Hayward. Take the exit toward the hills. Proceed northeast on Tennyson Rd. about 0.7 mile to the 5th stoplight. This will be Ruus Road.

Turn right on Ruus Road and proceed southeast for about 0.4 mile. Look for Calvary Baptist Church on your left.

Turn left into the driveway into the parking lot. Parking is available anywhere from the driveway to the back of the lot.

Look for the PCC signs.



PCC Clubhouse Seeking House!

PCC's Clubhouse is temporarily without a -- house. With extraordinary effort, Clubhouse VP **Sid Jordan** and clubhouse regulars **Tony Cozzette, Don Feist, Bruce Hevelin, Charles Landsmerer, Bob McGeary, Del Parton, Ted Rosaro, AC Robinson, and Michael Wong** cleared out years of accumulation and took it to the recycle center for cash. Their efforts added \$800 to PCC's finances.

That's the good news. The bad news is that the Clubhouse is temporarily homeless. We are working on a temporary

location from which the refurbishing activities can continue, but we are still seeking a larger facility from which the Clubhouse's full set of activities can continue. We are setting up a contact phone number where you can call and find out about Clubhouse progress.

If you know of a facility that can house our Clubhouse, (think of the old Clubhouse for size) contact anyone on the Executive Committee and let them know. Contact information for the E.C. is on page 2 of this Newsletter, or go to www.pcc.org and click on Contact Us.

News From The Help Desk

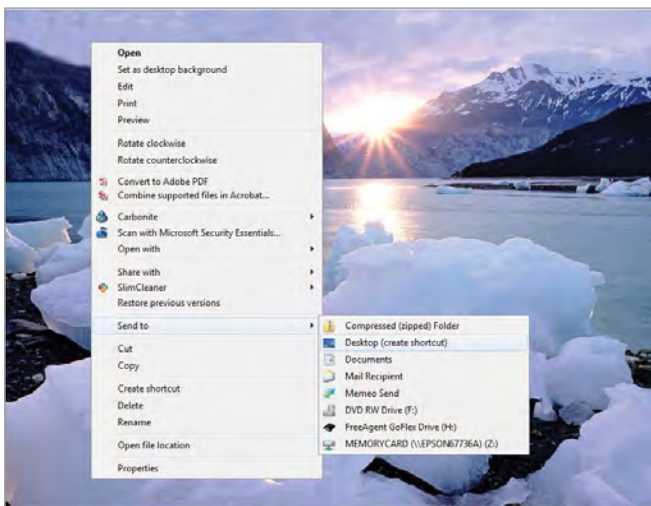
Common Tech Questions

Q I copied a picture from Windows' Pictures folder and pasted it to my Desktop. Now it is very small. Is there a way to resize it to original size?

A If you right-click a file in the Pictures folder and select the Copy command, Windows by default will copy and paste it at exactly the same size as the original. What appears on your Desktop is the icon for the picture, which is much smaller than the original image.

If the image is smaller, perhaps you are running a photo-editing tool that resizes images copied to certain locations. (Check the settings of your photo software to be sure). The only other possibility is that the image in the Pictures folder is smaller than you thought it was. To compare the two images, right-click each file, select Properties, and check the number listed under Size.

If the images are different sizes (an issue we cannot resolve without knowing what software you are running) right-click the original and select Send To, then Desktop. This will create a shortcut for the image (not a copy) on your Desktop. Double-click it, and it will open just like the original—because it is.



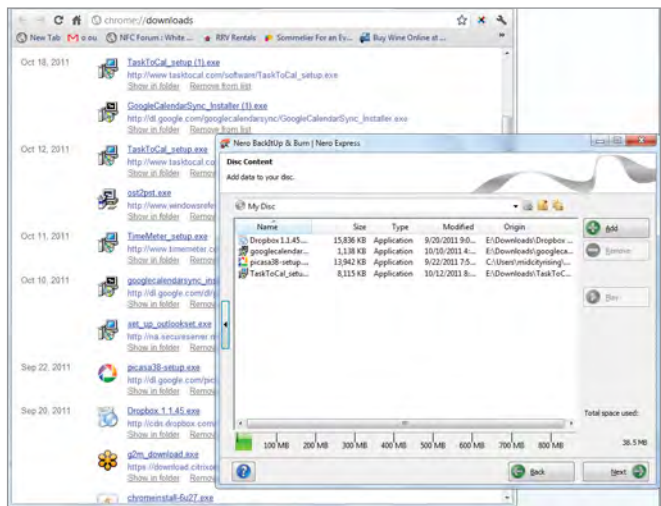
Although Windows should not alter a picture you copy from your Pictures folder elsewhere, you can ensure fidelity (and updates if the picture changes) by creating a shortcut instead.

Q How can I create a CD or DVD of downloaded program files from the download list in my browser?

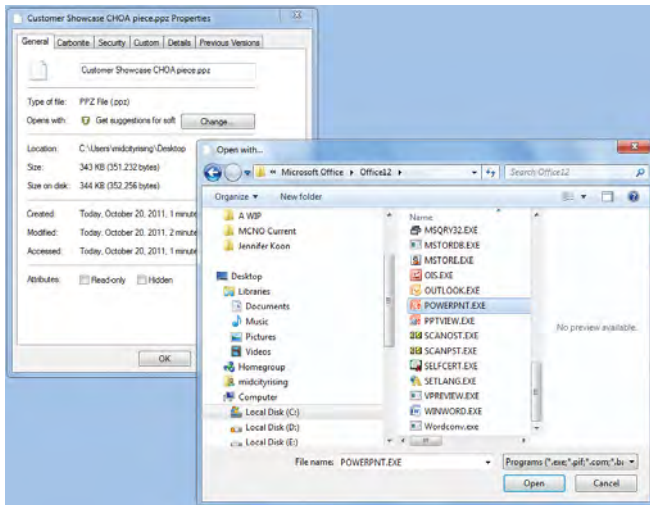
A Any download page is a list of what has been stored on the user's PC. Some browsers make the list of items active links—you can start installing software with a double-click, and you can save it somewhere else with a right-click. If this is the case, you may be able to click and then drag and drop the items you want to burn straight into your burning program's interface.

If this doesn't work, you can certainly archive your downloads to a CD or DVD from the folder where the browser stored the downloads. If you have not changed your default settings and do not choose the location of downloads, they may all be in the Downloads folder Windows creates on your hard drive.

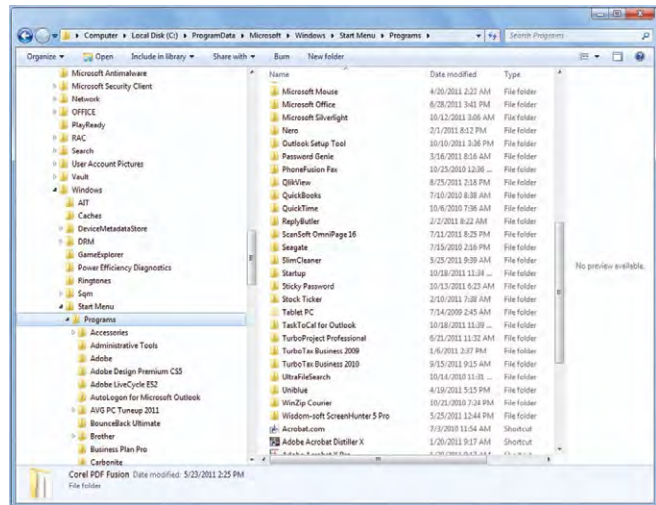
In Windows 7, click Computer in the Start menu and look for the Downloads folder in the folder pane on the right. Right-click it and select Open Folder Location. If you do not see a Downloads folder in the Start menu, you'll need to search for it. Click Start, type **Downloads** in the Search box, and press ENTER.



Creating a CD of programs you have downloaded from the Internet may be as easy as dragging them from your browser's downloads list to your burning tool.



You can force Windows to recognize any file association easily.



Rearranging your All Programs menu is as easy as opening the folder for its shortcuts.

Q When my mouse pointer goes over an item, it opens the item without me clicking or double-clicking the item first. How can I stop this?

A The answer depends on the type of item to which you refer. If it's a box or other element on a Web site, you may have no control. Elements associated with an action called a "mouseover" will open automatically if your cursor hovers over them, and there's not much you can do. (Keep your pop-up blocker turned on to avoid some of them.)

In Windows, certain settings enable you to open menus and folders with a mouseover, and others make it much easier to inadvertently open them. (Standard settings in Windows should not enable a mouseover to open files or programs.)

To disable mouseover opening for the Start menu, right-click the Start button and select Properties. On the Start Menu tab, select Customize. In the list of options, uncheck the option entitled Open Submenus When I Pause On Them With A Mouse Pointer.

Also, if you have folders set to open with a single click, when you hover over them with your mouse, Windows will automatically select them. Then, a click to select them—or even an accidental jiggle of the mouse—can open them. You can change the number of clicks it takes to open a folder in Windows in Folder Options. Select Computer on the Start menu, press the ALT key, click Tools, Folder Options, and choose either the Single Click or Double Click option.

Q I would like to have files I receive (in this case, PowerPoint, or PPS files) automatically open in the program when I click them. I went to the file association list and the file type is not listed.

A You're experiencing two problems: inability to open a file type when you double-click it and the file type's omission from the file association list.

To associate any file with a program that should be able to open it, save the file to a folder on your hard drive, right-click it, and then select Properties. On the General tab under Opens With, click the Change button. If you do not see the program listed, click Browse. Navigate to the program file (likely on your C: drive in a Programs or similar folder) and select it to force Windows to associate the file type with it. If it is a valid association, you should be able to open the file in that program with a double-click.

This will not resolve your problem with a system-wide, broken file association or a corrupt file associations list. This list is designed to be exhaustive. If any common file type is not there (check it by clicking Start, Control Panel, Programs, and Default Programs), you may have program or Windows Registry corruption. First repair or reinstall the problematic program, and if that doesn't fix the issue, run a PC or Registry cleaner before more trouble starts.

Q On the All Programs menu in the Start menu, I have many folders and items that make the menu unmanageable. How can I condense and rearrange the items in All Programs?

A This is one of the most helpful and easy fixes in Windows, thanks to shortcuts. In the Search box in the Start menu, type **C:\ProgramData\Microsoft\Windows\Start Menu\Programs** and press ENTER. This Programs folder contains only shortcuts to the real programs and folders, so you can move them around (but not delete) to your heart's content. (Use the left pane, which displays the folder and lets you expand subfolders) to help, as well. To avoid confusing Windows, restart the PC afterward. ■

Quick Tips

SECRETS FOR SUCCEEDING IN COMMON TASKS

■ Internet Explorer

Question: I want to know if I should update Internet Explorer, but I'm not sure which version I have. How do I find out and check for updates?

Answer: It's important to keep your Internet browser up-to-date in order to prevent potential security threats and to get the latest features. With Internet Explorer, the easiest way to find what version you have is to launch the browser, click the Help menu (or click

the button that looks like a gear in the upper-right corner), and then click About Internet Explorer. This

If you aren't running IE9, which was the newest version at press time, visit www.windows.com, select Products, and click Internet Explorer.



will tell you whether you're running IE8, IE9, or any other past versions. If you aren't running IE9, which was the newest version at press time, visit www.windows.com, select Products, and click Internet Explorer. On this page, you can follow the steps provided to download IE9. If you already have IE9, you can check for updates by clicking Start, Control Panel, System And Security, and then Windows Update.

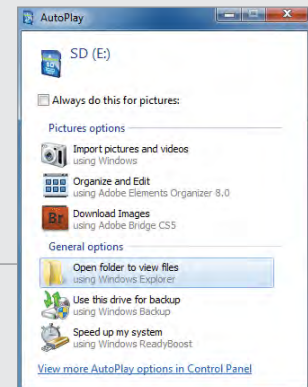
The About Internet Explorer window shows you which version of IE you're running. Microsoft's site has downloadable updates for IE and other programs as well.

■ Image Transfer

Question: I want to move some images from my phone to my computer, but I can't find my phone's cable. Is there another way to transfer them?

Answer: There is no need to panic because there are plenty of options. You can email the images to yourself and check your email account to download them to your computer. You can also remove the SD (Secure Digital) card from your phone, if it has one, and insert it into your computer's memory card slot (you may need an adapter). If your computer does not have a built-in reader, you can connect an external media card

reader to your computer via USB. Once connected, you can then click and drag photos to your hard drive. Remember to move photos from your phone's internal memory to your SD card first to make sure you get everything you need. Another option is to connect your phone to your computer via Bluetooth, if it supports it, and transfer photos that way.



If you use your phone's SD card to transfer photos or other files, this AutoPlay menu should pop up when you insert the card. Click Open Folder To View Files, find the photos you need, and then click and drag them onto your Desktop.

From this menu, you can choose which monitor you want to be the main display in a multi-monitor setup. The main display is where the toolbar and Desktop icons will appear.



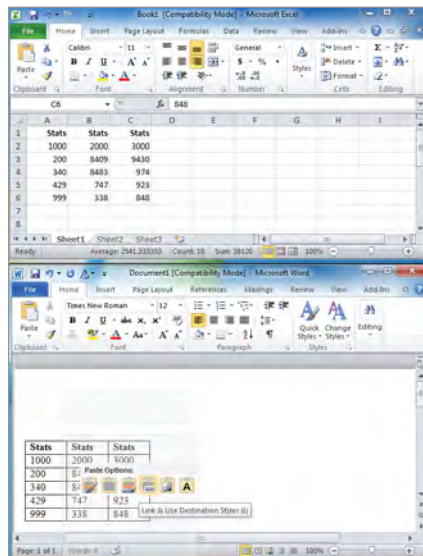
Multi-Monitor Setup

Question: I'm using a multi-monitor setup with my laptop on the left and my desktop monitor on the right. When I try to move my cursor from the monitor to the laptop, it won't appear on the laptop's screen. What's wrong, and how do I fix it?

Answer: There's a good chance that if you're experiencing this problem, your monitor set-

There's a good chance that if you're experiencing this problem, your monitor settings are just a little bit off.

tings are just a little bit off. But luckily, there is an easy fix. Right-click anywhere on your Desktop and select Screen Resolution from the menu. From here, you'll see that your laptop's display and your monitor are shown as images with a number 1 or 2 over them. Because your monitor is on the right, make sure that the image that represents your monitor is on the right. If it isn't, you can click and drag it. Click Apply or OK and you should now be able to move your cursor freely between the two displays.



Microsoft Excel & Microsoft Word

Question: I have identical information stored in both a Microsoft Excel spreadsheet and a Word document. Is there a way to make the information in the Word document automatically update when I make changes to the Excel file?

Answer: If you made a table in Excel that you want to move into a Word document, it's as easy as copying and pasting. Select the portion of the spreadsheet that you want to move over and click Copy. Then, in the word document, right-click where you want to put the table. Under Paste Options, you can select Link & Keep Source Formatting or Link & Use Destination Styles. If you choose the latter, it will appear as a table in your document with dividing lines between cells. But no matter which Link option you choose, the information will update whenever you make changes to the original Excel file.

When copying info from an Excel spreadsheet to a Word document, you can choose Link & Use Destination Styles to paste a table with dividing lines between the cells.

User Accounts

Question: I take my laptop with me for both home and work use. How do I make another user account so that members of my family can safely use my computer without accessing work files?

Answer: It's definitely a good idea to have separate user accounts for work and home use, especially if there's a chance your kids might use your computer and mess with your important documents. Click Start and go to the Control Panel. Click User Accounts And Family Safety, User Accounts, and Manage Another Account. Click Create A New Account and set it up as a Standard User. Whoever has access to this account can access the Internet, download files, and more without affecting the other user accounts.



When creating a new user account, designating the new account as a Standard User ensures you have complete control over it as the Administrator account.

Door Prizes

Congratulations to all the members who won door prizes at the Main Meeting!

General Drawing:

CK-12 Water Bottle.....	Diane George
Microsoft Bob CD.....	John Yamada
OS/2 tee shirt.....	Chris Yager
System Mechanic tee shirt.....	Walt Buschow
AVT calculator.....	Sally Holt
Voice of the GO tee shirt.....	Andrew Tews
ERX pocket knife.....	Bud Gallagher
PC FM AutoScan Radio.....	Bayle Emlein
PC FM AutoScan Radio.....	Bob Dunn
Casio bag.....	Dan Peterson
IBM messenger bag.....	Bill Huston

Raffle Prize:

32 GB Memory Master USB drive.....	Don Odle
------------------------------------	----------

Door Prize Donations

O'Reilly Media generously donates the books for our door prizes. Go to www.oreilly.com and pick books you'd like to see on our door prize table. E-mail the names and ISBN of the books you want me to request.

Elsie Smith
lcms@pacbell.net

dominique
& co.

HAIR SALON



510.782.7014
20500 C Hesperian Blvd.
Hayward, CA 94541

Family and Cosmetic Dentistry
www.mycastrovalleydentist.com

Timothy Bennett D.D.S.
3209 Castro Valley Blvd. Suite #1
Castro Valley, CA 94546
Phone (510) 881-0620
Naturally Beautiful Smiles
tbennettdentistry@yahoo.com



CARING PET HOSPITAL



SARUP S. MANGAT, D.V.M.
605 Greeley Court
Hayward, CA 94544

Office Hours:
Mon.-Wed. 8:30 am-6 pm
Thurs.-Fri. 8 am-6 pm
Sat. 9 am-2 pm

Telephone: (510) 537-1788
Fax: (510) 537-3103
www.caringpethospital.net

Membership Dues

Regular.....	\$35.00
Family (same household).....	\$45.00
Educational, Seniors.....	\$20.00
Corporate (maximum 5 memberships)...	\$100.00

Make a check payable to PC Community in the amount listed above to:
PC Community
P.O. Box 55513
Hayward, CA 94545-0513

Dues Expiring This Month!

The following members dues expire this month:

Larry Bisbiglia
David Evans
Diane George
Dolly Marston
John H. Yamada

Special Interest Group Meetings



Del Parton - (510) 276-4292
delpa@pacbell.net

Saturday after Main Meeting: 8pm



Dan Dolgin - (510) 895-8845
dandolgin7@comcast.net
3rd Monday of the month: 7:30pm
<http://www.pcc.org/mobile>



David Graham - (925) 997-9646
dmgraham98@yahoo.com
3rd Monday of the month: 7:30pm
<http://www.pcc.org/mobile>



Bud Gallagher - (510) 269-3623
budgall@comcast.net

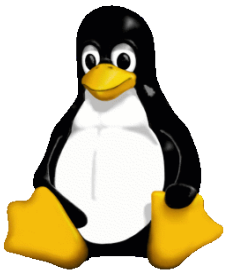
2nd Saturday of the month: 1pm

Room for more
SIGs here-
start one!



Jan Fagerholm - (510) 213-8421
pcc4me@gmail.com

Last Saturday of the Month: 2pm



The Penguin Partition Linux for Human Beings

by Jan Fagerholm, PCC Penguinista

Snowy holidays approach, which is a good time for penguins. End of October sees the semi-annual upgrade of Ubuntu (to 11.10) and the follow-up of Linux Mint (12), and others that are based on Ubuntu, a few weeks in tow.

The significance of Linux Mint is that it is the number two distro in popularity, just behind Ubuntu, which has held the number one spot for several years now. Where Ubuntu is staunchly neutral by its absence of proprietary software to avoid international copyright complications, Linux Mint boldly folds in many applications and drivers that are considered proprietary by the GNU license. Mint also distinguishes itself with an interface most approachable by Windows users.

This desktop paradigm is being challenged these days by tablet computers, notably the iPad and its challenger Android. The degree to which this is influencing vendors is best illustrated by Microsoft's publicity push on Windows 8 so soon after Windows 7 went gold. Microsoft has a trivial market share in both the SmartPhone and tablet

market, where all the growth is, and has been promoting Windows 8 18 months ahead of its projected release to try to stay in the game. Windows 7-based tablet sales have been abysmal. Witness the introduction and cancellation of HP's Windows tablet within weeks of each other.

On the Linux side, GNOME 3 is out with a tablet-style interface, and Ubuntu has their own version called Unity. Several other Linux distributions have adopted GNOME 3 as well.



Linux Mint has always stood out with the best thought-through interface. With the introduction of GNOME 3, they have had to make a choice as well, and right now, I think they have come up with the best solution between the old and the new: with their MSGE and MATE technologies, they have managed to mash both new and old interfaces onto the desktop where you can use them both at the same time and make your own decision. Usability is paramount, and it is the best solution I've seen yet.

You will certainly hear more from me on this, but for now, download the live CD and try it for yourself.



PCC Main and Executive Meeting Highlights

Secretary — Bayle Emlein
pcc@ix.netcom.com

Treasurer — Tom Smith
smith-tf@pacbell.net

Main Meeting Highlights

The meeting was called to order at 7:37 p.m. by President Chuck Horner. He noted that PCC needs to do some outreach and tell people about the user group. He distributed business cards that members can hand out to share information. The Clubhouse has met with Alameda County Recycling and will have more information after another meeting in the middle of November. He encouraged everyone to buy a ticket for the raffle prize.

SIG Announcements:

The Windows 7 SIG will meet at Bud Gallagher's at 1 p.m. on the 12th, the customary second Saturday. The plan is for Verne Perry to present accessing Windows through a Linux boot disc.

Elections for the PCC Board of Directors will be held during the December Main Meeting.

Presentations: Bill and Diane George presented a genealogy overview. Start by creating a sheet with what you know about your grandparents Names, birth and death dates. Whenever you visit a relative, bring a camera and a scanner and get as much information about family history. Keep track of everything, not only what you have but also where you got it. Census records records go back to 1790 and are available through 1930. Because of handwriting errors in older documents, there may be errors in names. Diane warned her listeners to examine all data carefully. Diane will post the PowerPoint with all the references on the website. The more significant include:

The Latter Day Saints have many genealogy resources at many locations around the country. The website at [Http://familysearch.org](http://familysearch.org) also has many support resources.

[Http://ancestry.com](http://ancestry.com) has a variety of levels of access. It is the largest paid database and has the widest range of resources and indexes worldwide.

[Http://www.findagrave.com](http://www.findagrave.com) has volunteers who take pictures of tombstones and upload information about tombstones.

Another volunteer resource is <http://www.usgenweb.org>. Each state and most US counties have web pages. They are looking for more volunteers. This is one reason that

knowing which county you're looking for is important.

[Http://genealogytrails.com](http://genealogytrails.com) is also a volunteer site organized by state.

Googlebooks indexes books so that you might find a reference to a historical ancestor.

aclibrary.org has an excellent set of online resources and most library locations have a subscription to ancestry.com.

[Http://www.cyndislist.com](http://www.cyndislist.com) is a famous site with links to many sites. It is well organized so that it is easy to click through and find some resources.

There are a number of ways for getting information onto a computer. Family Tree Maker and Legacy get to reviews for the PC world. Family Tree Maker can be integrated into Ancestry.com. Reunion runs natively on a Mac. Wikipedia has a comparison of genealogy software packages.

There are also sites where one can post family tree information for others to see. Some companies also offer web-based storage. There are other companies that will print up charts. A book is another kind of output that can be created from the data.

After the break Chuck distributed printed descriptions of the PCC Election procedures. The following people were nominated:

- Andrew Tews
- Chuck Horner
- Michael Wong
- Don Odle

Nominations will remain open until voting at the December main meeting.

Bud Gallagher demonstrated iTwin, which works like a remote desktop. One part of the USB is installed on his computer at home. He installed the other end of the iTwin USB on Diane's computer—which had never seen it before. He then logged on to his home computer.

Question about transferring from Eudora to Thunderbird. Eudora has not been updated since 2002. Bud used a program called Aid for Mail to convert the Eudora files. Question about how to write a letter, scan it, and attach to an email.

The meeting was adjourned at 10:12 p.m.

The next meeting will take place at the same location on December 2, 2011.

Respectfully submitted,
Bayle Emlein, Secretary

Executive Committee Meeting Highlights

The meeting was called to order at 2:22 pm by President Chuck Horner.

Members present: Bayle Emlein, Jan Fagerholm, Diane George, Sally Holt, Chuck Horner, Sid Jordan, Tom Smith.
Absent: Elsie Smith, Tom Smith.

The minutes of the October meeting were approved.

Old Business:

Elections for the 2012 PCC Board of Directors: Nominees from the November Main Meeting:

Andrew Tews
Chuck Horner
Michael Wong
Don Odle

New nominations at the EC meeting:

Jan Fagerholm
Sally Holt
Bayle Emlein

The names of the current nominees were randomized for the ballot. There will be space on the ballot for last minute nominees at the December Main meeting.

It was moved and seconded that an additional 100 Windows XP CoA licenses be ordered through the Microsoft RRP be ordered.

Jan is exploring purchase of an HDMI to VGA cable. Jan is working on the new membership form. Diane has renewed PCC membership in APCUG.

President's Report - Chuck Horner: Chuck is exploring possibilities for a new site for the Clubhouse. He asked Sid to write up specific parameters so that he can present them to potential partners.

Executive Vice President – Sally Holt: Nothing special to report.

Treasurer - Tom Smith: As of November 19, 2011:

Checking Account	Total
\$4,130.10	\$4,140.10

Secretary - Bayle Emlein: Nothing special to report.

VP Clubhouse - Sid Jordan: Sid reports that the Clubhouse refurbishing project has a temporary home with internet, sufficient power, plumbing (for the human components), and other amenities. They are establishing a schedule and

working out other details. Chuck has information about another potential location.

Jan has been working on keeping the CoA activity current. He will send Sid specific instructions for the Clubhouse meeting next Tuesday.

VP Marketing – Position open:

VP Membership - Jan Fagerholm: Member count as of November 19, 2011.

Regular	Senior	Student	Associate	Total
29	31	2	4	66

VP Newsletter - Elsie Smith:

November 19, Saturday midnight, December Newsletter submission deadline

December 17, Saturday midnight, January Newsletter submission deadline

Sid brought up the advantages of having an opt-in system for print newsletters. Jan noted that printing costs will not go down significantly because of the economies of scale. The cost savings would be in postage.

Those who wish to opt in to receiving only electronic versions of the Newsletter should inform either the Newsletter or Membership staff, Elsie or Jan. The Newsletter continues to be available at the PCC site as a downloadable PDF.

VP Special Projects - Bayle Emlein: Nothing special to report.

Webmaster - Diane George: No changes needed to the website right now. Diane is planning to update the software when she has time.

Calendar: See the website for the latest updates and changes in SIG meetings. The November Linux SIG is cancelled, the December meeting will probably change dates from 12/31.

Programs -

December: Elections; Short presentations - So far: Ultrabooks by Diane George, Linux Mint 12 by Jan Fagerholm, with an eye to comparing with Windows 8; Android apps by Chuck Horner.

January: Show off the tech toys you got for the holidays. Bring them in and get some help if you need it.

Fund Raiser: December: Plantronics Bluetooth In-car Speakerphone

New Business: None.

Date and Time of Next Meeting: Saturday, December 17, 2011 at 2:00 pm, 28924 Ruus Road, Hayward.

The meeting was adjourned at 3:25 pm.




Respectfully submitted,
Bayle Emlein, Secretary

PC Community
 P.O. Box 55513
 Hayward, CA 94545-0513



Season's Greetings

December 2011

Sunday	Monday	Tuesday	Wednesday	Thursday	Friday	Saturday
Check the calendar at www.pcc.org for up-to-date information!			See Page 9 for SIG Meeting information.	1	2 7:30 pm Main Meeting	3 8 pm-Hardware SIG
4	5	6	7	8	9	10 1 pm-Windows 7 SIG
11	12	13	14	15	16	17 2 pm-Exec. Committee Mtg.
18	19 7:30 pm- Mobile Computing SIG	20  Hanukkah	21	22	23	24 Christmas Eve
25  Christmas Day	26	27	28	29	30	31 2 pm-Linux SIG  New Year's Eve

The **January 2012 Main Meeting** will be at 28924 Ruus Road, Hayward CA, on **January 6, 2012** at 7:30 P.M.