

See Windows 8 Run!

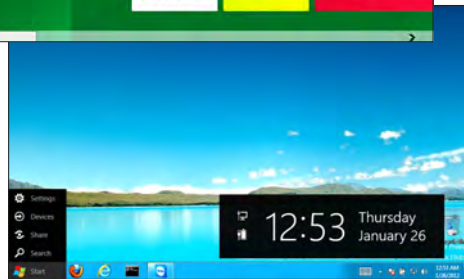
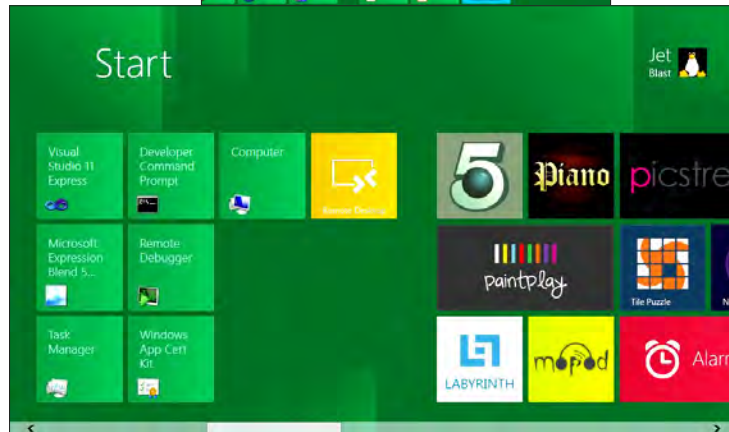
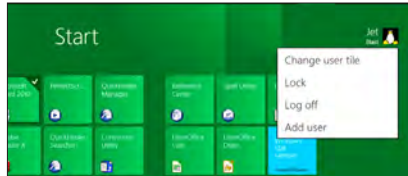
You've heard about it! You've read about it! -- you don't have to learn an entirely new interface to get things done -- but the re-write of Windows foundations and the new Metro interface provide a new and simple way to work more suitable for tablet computers and smartphones. And it's the Metro interface that has all the whizzy new features.

This month, a hands-on look at the upcoming Windows 8. Not your father's Windows, there are major changes in the new Windows that will change the way you use your computers.

Never mind the bullet-pointed Power Point presentations or the Microsoft video demonstrations -- PCC's own technical staff have put Windows 8 Developer Preview (pre-beta) on a tablet computer in order to show you how it really works in a touch screen environment.

Sure, the traditional Windows desktop is there

all around. See you there!



work more suitable for tablet computers and smartphones. And it's the Metro interface that has all the whizzy new features.

Come to the Main Meeting! In addition to the friendly new interface, there'll be good fun, good food, and good friends

Raffle!

This month, an 8" ViewSonic® VFD823-50 digital photo frame, with LED backlight. It supports high resolution of 800x600. The aspect ratio of 4:3 is the best format for displaying digital photos where images appear natural and undistorted. Easy to use on-screen menus and controls allow you to create and edit your own personal slide shows. The sleek frame design complements any home or office. The VFD823-50 supports most popular card readers. Features calendar & clock and auto on/off. AND, it's YOURS for the price of a ticket.

Tickets are \$5 each, available where you sign in. Need not be present to win.



What's Inside:

Newsletter Information..... 2	Map & Directions to Main Meeting..... 3	SIG Meetings- Information..... 9
PC Community Officers..... 2	PCC Clubhouse 3	Penguin Partition..... 9
About PC Community 2	President's Podium 4	Main & Exec. Meeting Minutes.....10
PCC Announcements..... 3	Windows 8 Pains 'n' Gains..... 6	PCC Events Calendar.....12
	Advertisements..... 8	

About PC Community



EDITOR
Elsie Smith
 lcms@pacbell.net

Associate Editor: Jan Fagerholm

Online Editor: Diane George

Contributors: Bayle Emlein, Jan Fagerholm, Diane George, Chuck Horner and Elsie Smith.

Deadline: Copy must be submitted no later than the second Saturday prior to the Main Meeting. Check the Newsletter calendar for the date. Submissions should be made by e-mail to the Editor, **lcms@pacbell.net**. Advertising rates are available from the Editor.

Contents © 2012 PC Community, except as noted. Permission for reproduction in whole or in part is granted to other computer user groups for internal, non-profit use, provided credit is given to PC Community and to the authors of the material.



Adobe InDesign CS2 is used to publish
 PCC News

PCC Officers and Staff

- President — Chuck Horner**
 churck@comcast.net (510) 589-9677
- Executive Vice President — Sally Holt**
 nole62@pacbell.net (510) 785-3593
- Treasurer — Tom Smith**
 smith-tf@pacbell.net (510) 545-2077
- Secretary — Bayle Emlein**
 pcc@ix.netcom.com (510) 652-1726
- VP Clubhouse — Sidney Jordan**
 sjordan321@aol.com (510) 886-8188
- VP Marketing — New VP Needed**
 you@righthere.com (510) 123-4567
- VP Membership — Jan Fagerholm**
 pcc4me@gmail.com (510) 213-8421
- VP Newsletter — Elsie Smith**
 lcms@pacbell.net (510) 545-2077
- VP Programs — New VP Needed**
 you@righthere.com (510) 123-4567
- VP Special Projects — Bayle Emlein**
 pcc@ix.netcom.com (510) 652-1726
- Webmaster — Diane George**
 digeorge@sbcglobal.net (510) 538-2449
- APCUG Representative — Diane George**
 digeorge@sbcglobal.net (510) 538-2449
- Network Coordinator — Paul Cooper**
 paulc2553@yahoo.com (510) 733-2613
- Projector Coordinator — Jan Fagerholm**
 pcc4me@gmail.com (510) 213-8421

Board of Directors

- Bayle Emlein**
 pcc@ix.netcom.com (510) 652-1726
- Jan Fagerholm**
 pcc4me@gmail.com (510) 213-8421
- Sally Holt**
 nole62@pacbell.net (510) 785-3593
- Chuck Horner**
 churck@comcast.net (510) 589-9677
- Elsie Smith**
 lcms@pacbell.net (510) 545-2077

Clubhouse Information

Please check page 3 for information regarding the Clubhouse. Communication with the Clubhouse should be directed to PC Community, P.O. Box 55513, Hayward, CA 94545-0512.

PC Community is a computer users group for people who wish to expand their knowledge and experience of personal computers and software. This is accomplished through monthly general meetings of the full membership where major industry vendors present information, and through smaller focus groups (Special Interest Groups, or SIGs) where members meet to share common computer interests. The group's monthly Main Meeting takes place at Calvary Baptist Church, 28924 Ruus Road, Hayward, at 7:30 P.M. on the first Friday of each month.

PC Community is dedicated to community service, providing enabling technology to people with special needs, working in the community to obtain computer equipment, and working with other computer groups to help people extend their lives through computer technology.

PC Community has a Web site at <http://www.pcc.org>.

Membership dues are \$35.00 per year. \$20.00 for educational and seniors(65 and over), and \$45.00 for family per year. Call 510-213-8421 for more information, or write to PC Community at the address on this page.



**ICEMAN
 Consulting
 Enterprises,
 Inc.**

Thanks to PCC Member *Chris Yager*,
 ICEMAN Consulting Enterprises, Inc.,
 for printing PCCNews.
 iceman@prado.com - (510) 317-5900



PCC is a member of the Association
 of Personal Computer User Groups
 (APCUG)

PCC Announcements

O'Reilly - Books and Media

Review a Book: Review an O'Reilly book and get published in the PCC Newsletter and on the PCC Web Site. Find a book that interests you at www.oreilly.com, e-mail me the name of the book and ISBN so I can order it for you. PCC requires a deposit from you

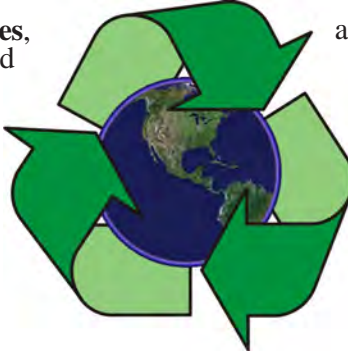


in the amount of the User Group price, a 35% discount. You have 60 days to complete the review, at which time the deposit is refunded and you keep the book.

Elsie Smith - PCC UG Representative to O'Reilly
lcms@pacbell.net or 510-545-2077

PCC Recycle Program is Back, Bigger and Better!

Your used **toner cartridges**, old **cell phones**, used **inkjet cartridges**, old **PDA's** and defunct **iPods** are valuable. Don't toss them in your trash to be used as landfill. They are worth something to PCC and other groups, either in the form of exchange or as discount on products at some local retailers. This not only helps PCC, but also helps our community. You can drop



any of these items off at a Main Meeting or an EC Meeting. Do your part for PCC and your community! Keep the environment clean by taking a few extra moments to recycle these items with PCC.

contact:
Chuck Horner
churchk@comcast.net
510-589-9677

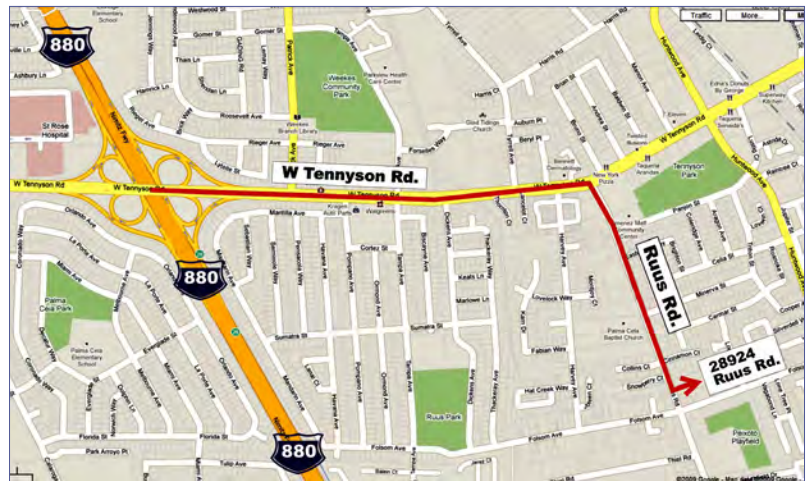
Directions to the PCC Main Meeting

From All Directions: take 880 to the Tennyson Road exit in Hayward. Take the exit toward the hills. Proceed northeast on Tennyson Rd. about 0.7 mile to the 5th stoplight. This will be Ruus Road.

Turn right on Ruus Road and proceed southeast for about 0.4 mile. Look for Calvary Baptist Church on your left.

Turn left into the driveway into the parking lot. Parking is available anywhere from the driveway to the back of the lot.

Look for the PCC signs.



PCC Clubhouse Seeking House!

PCC's Clubhouse is temporarily without a -- house. With extraordinary effort, Clubhouse VP **Sid Jordan** and clubhouse regulars **Tony Cozzette, Don Feist, Bruce Hevelin, Charles Landsmerer, Bob McGeary, Del Parton, Ted Rosaro, AC Robinson, and Michael Wong** cleared out years of accumulation and took it to the recycle center for cash. Their efforts added \$800 to PCC's finances.

That's the good news. The bad news is that the Clubhouse is temporarily homeless. We are working on a temporary

location from which the refurbishing activities can continue, but we are still seeking a larger facility from which the Clubhouse's full set of activities can continue. We are setting up a contact phone number where you can call and find out about Clubhouse progress.

If you know of a facility that can house our Clubhouse, (think of the old Clubhouse for size) contact anyone on the Executive Committee and let them know. Contact information for the E.C. is on page 2 of this Newsletter, or go to www.pcc.org and click on Contact Us.



President's Podium

Chuck Horner

churck@comcast.net

HELPING OTHERS or HAEMORRHAGE

“HAEMORRHAGING - losing (something valuable) rapidly and in quantity.”

That is what our organization has been doing the past few years. We are not the only computer users group with this trend, but that is no excuse to just let it happen.

Our faithful Treasurer, Tom Smith, has warned us several times that “our expenditures exceeded our income. At the current rate..., we will run out of money in 2013.”

Here are the total members and assets I harvested from our 2011 newsletters:

Dec	62	3,836.77
Nov	66	4,140.10
Oct	68	4,462.97
Sep	68	3,768.25
Jul	69	4,063.29
May	69	4,918.10
Apr	67	5,052.59
Mar	67	5,263.88
Feb	79	5,253.20
Jan	74	5,420.47
Dec	88	5,440.00

have opted out of receiving a paper newsletter is so few that this option does not represent a significant saving.” Let’s see what happens in the next six months. The choice is not engraved in stone. We promise to evaluate the choice again in six months.

It happened again this year. At least once a year we have a member suggest a less expensive way to print our newsletter. So far, none of them have come close to the greatly reduced cost we receive through our generous expert printer and fellow member, Chris Yager. Thank you Chris!

THIS IS A TEST!

PCC members MAY opt out of receiving the printed version of the Newsletter and can request e-mail notification with the Newsletter as a PDF attachment as it becomes available. When choosing this option, e-mail Elsie at LCMS@pacbell.net or Jan at pcc4me@gmail.com Using e-mail to initiate the transaction will give the Newsletter staff your current e-mail address. The financial and environmental advantages were discussed. In June, the EC will review the desirability of continuing this program.

NEWSLETTER

It seems to me, at least once a year some member suggests we stop printing a newsletter to save money and effort. Your Executive Committee has heard repeatedly that other computer user groups who have stopped their printed newsletters for a digital version only - then have declined anyway. So we are modifying the proposal as a CHOICE. We will continue to provide printed copies at this time. If you prefer to save us the postage, expense and effort, please let Elsie or Jan know. So far, “Elsie noted that the number of people who

MEMBERSHIP DUES

Your Executive Committee minutes read, “It was moved, seconded, and unanimously approved that all members be asked to pay dues regardless of their position or service to PC Community.” If you feel that you should be compensated for your service to this organization , you are entitled to continue enjoying free membership without dues. However, in light of our financial condition, there are a few of us who serve in leadership and still want to contribute dues anyway.

President's Podium

Continued from page 4

There are members who have purchased items for raffle prizes and door prizes but never turned in a receipt for reimbursement. There are members who have made many other financial and in-kind donations as well. If it were not for the income from our faithful Clubhouse workers, we would have run out of money long ago. THANK YOU to all you generous members.

"Make all you can, save all you can, give all you can."
-- John Wesley

I appreciate the technical advice and support, but the greatest reason for me joining the PC Community is that we are a community service organization.

COSTS v MEMBERSHIP

It is my observation, with this as well as other organizations, that there is a threshold below which we are unsustainable. For our group, that number is somewhere around 120 members. Look at our membership compared to assets.

Dec 2011: 62 - \$3,836.77
Dec 2010: 88 - \$5,440.00
Dec 2009: 99 - \$7,638.73
Dec 2008: 104 - \$8,716.68
Dec 2007: 120 - \$9,150.16
Dec 2006: 169 - \$6,750.16

CONCLUSION

We need to reach out to our community with the services we provide. If we serve others, the finances will come. Let's set a goal of reaching at least 120 members before December 2012.

Start by sharing this link with friends and bring them with you at our next meeting:

Ten reasons to Join PCC:

<http://www.pcc.org/index.php/about-pcc/10-reasons-to-join>

10. Assistance with your technical questions or help with your computer problems.
9. Raffles and free drawings.
8. Vendor product demonstrations, often offering big discounts to club members.
7. Technical presentations by club members on

subjects of current interest.

6. Workshops dedicated to exploring areas of technology of interest to you.

5. Fellowship with people with similar interests in computers and related technology.

4. Monthly newsletters with reviews and other information on current technology.

3. Access to our clubhouse to socialize, build, repair, and refurbish computers to donate to worthy individuals and organizations.

2. Our clubhouse with access to the internet, computers loaded with software you may not have on your system, scanners, CD burner, laser printer and more.

1. Involvement with the largest and most active group of its kind in the Bay Area.

We have Special Interest Groups (SIG's) and develop new ones from time to time.

Annual membership rates are reasonable at:

\$35.00 regular membership.

\$20.00 for those over 65 or full time students.

\$45.00 for two members of the same household

Whoops, that's 12 reasons to join.





Windows 8 Pains 'n' Gains

Here We Go Again. . .

by Jan Fagerholm, PCC Pain Reliever

Windows 7.8

You've heard it. Windows 8 is coming. We just got Windows 7 fixed and now Microsoft has a major media blitz promoting Windows 8. It's still a year away, but they are spending millions of dollars to put Windows 8 in your face. Why?

Windows and Intel are not getting warmed by the hot space in the computer marketplace. Intel CPUs are conspicuously absent from any of the popular tablet computers, and what few there are run the underpowered Atom CPU and have abysmal battery life. Windows tablet sales have been slight against Android and iPad. Sales performance was epitomized by HP's late introduction of a Windows 7 tablet followed a few weeks later by its cancellation.

This is the first in a series of articles chronicling the development of Windows 8. My effort is sparked by a lack of information about Metro on touch screen tablet computers. Apart from Microsoft demonstrations at developer conferences, there is very little about actually using the Metro interface. And after all, it is tablets, not desktop PCs, that started Microsoft on this project to begin with.

Microsoft is often on the backwash of the marketplace, and now is no exception. Tablet and netbook sales are the growth market, and Windows' heavy resource requirements are deplorably unsuited to this hardware. Thus, Microsoft has set out to rewrite Windows to be leaner, and to create an interface suitable for touch screen use. We will explore how they are doing.

The new interface is Metro, and is populated by Tiles, which are big pushbutton icons that start things. Metro looks sparse, a stark contrast to Aero, and a clear nod to the lesser graphics hardware found in tablet and netbook computers. Metro is invoked by the Start button and replaces what used to be the programs menus.

Installing Windows 8 is geeky enough for those willing to test alpha software. Download the .iso image of your choice from the MSDN Website. Desktop versions are:

32-bit client, 64-bit client, and a 64-bit client with previews of the Windows 8 developer tools preinstalled. If you try this, note that the version with the developer tools requires a DVD9 (dual layer) disk to burn it. The CTL 2GoPAD SL-10, like most tablets, does not have an optical drive. After several failed attempts to use utilities to make a bootable flash drive out of the .iso (that's another story), I plugged in an external DVD drive and installed from there.

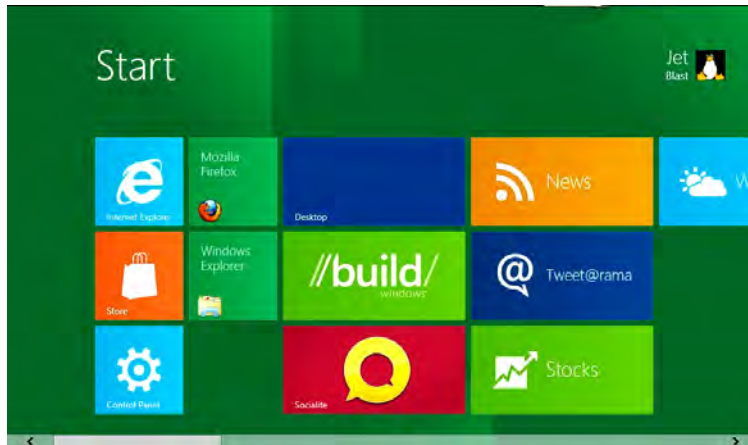
Installation is much the same as Windows 7 retail; the choices are an Upgrade install (if Windows is already on the target hard drive) or clean install. I elected for a clean install to avert complications. The installation process took about 45 minutes.

First boot presents a simple green screen that walks you through elementary configuration. The Preview version is wired to connect to a Windows Live account if you have one. It asked for the password to the Live account, then made that the password for login to the computer. It did not

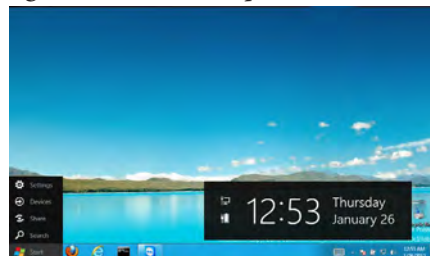
enable the wireless card during Setup, so Action Center complained that I was not logged in when the desktop arrived.

"Desktop" is a dysphemism here, as where you arrive is Metro, the tile-based interface. Metro is stocked with several tiles that allow you to see what a populated Metro looks like, and allow you to play with touch-scroll to view the entire desktop. Pinch-zoom does not work here, however.

In Windows 8 Developer Preview, not all the Metro tiles work yet: Control Panel, Windows Explorer, Computer, and Desktop are some that do. Additionally, Visual Studio 11, the Windows 8 version of the development environment works. The Desktop tile takes you to the traditional Windows desktop with the Windows 7-style



The exciting new Metro desktop. . .



. . . or your plain ol' regular desktop.

Windows 8 Pains 'n' Gains

Taskbar and wallpaper.

Metro is quite simple to navigate: the home desktop scrolls sideways with the swipe of a finger, similar to Android tablets. Tapping a tile launches its application, which usually then starts in the traditional desktop. Tiles exhibit an intriguing possibility of differing actions depending on how you press them. If you press center, the application launches; if you swipe the tile, a check mark appears on the tile, and a menu bar pops up at the bottom of the screen offering several actions that can be performed. If you press the top, bottom, left or right edge of the tile, the tile distorts in that direction, implying that you can get a context-sensitive response there. So far, this doesn't work.

To get to the conventional desktop, tap the tile in Metro labeled "Desktop" (duh). There you will encounter a Windows 7-style desktop – wallpaper, Taskbar and all. The only difference is that the Start button has been replaced with one that goes to Metro instead. This is the intended launcher rather than traditional menus. Working on the desktop, the traditional windows and menus demonstrate their unsuitability for touch screens. This can be alleviated somewhat by fiddling with the desktop font size, which makes the menus and other items large enough to tap fairly accurately with fingertips. The traditional desktop does not support pinch-zoom: too bad, that would help a lot.

Applications that are Windows 7 compatible install normally, without having to use compatibility mode as in the previous Windows 8 alphas. Microsoft Office 2010, WordPerfect Office, and LibreOffice work (so far) normally. During installation, the shortcut items that would normally go on the menus in Windows 7 create tiles in Metro instead, stacking them to the right of existing tiles and grouping them together according to installation session. Undesired tiles can be removed by the aforementioned swipe-the-tile to select, then choosing "Unpin" from the pop-up menu.

Compiling sample programs from MSDN hasn't produced

the desired results yet, but this is because of what I don't know about Windows compilers, and I've probably failed to link something properly. When the program is installed, a tile is created in Metro, but it doesn't work. Yet Another Learning Experience.

Windows 8 Developer Preview "pre-beta" is the build they get when they first jam code pieces together and knock off some of the pointy parts in a first effort to make them work together. I must mention that you really don't want to try and use this on your main computer. Batteries Not Included. Some Assembly Required (pun intended). Object Oriented Code In Mirror Is Closer Than It Appears. You Have Been Warned.

Nits: 1) Bluetooth doesn't work yet, and the factory provided driver refuses to install. This is a real penalty using the traditional desktop on a tablet, as you really want a bluetooth keyboard and mouse when working with the traditional desktop. (Try USB devices.)

2) Wireless doesn't start reliably, and it often takes two or three restarts before it wakes up. Factory drivers won't install.

3) The traditional desktop is no more usable with a multi-

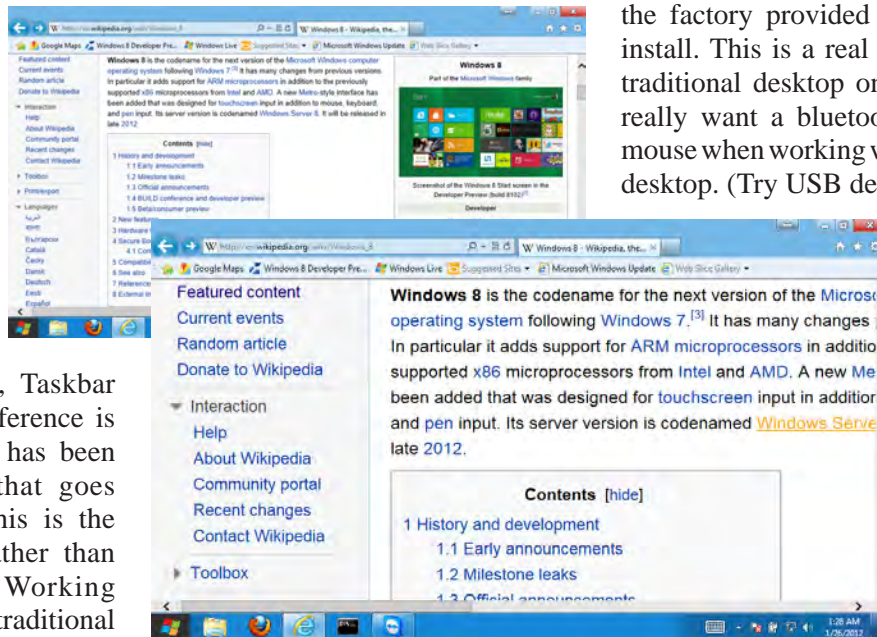
touch screen than Windows 7 was.

Picks: 1) Boots up really fast! 10 seconds from power on to login screen.

2) Shuts down really fast! 10 seconds to power off completely.

3) Several Windows components support multi-touch screen. Internet Explorer can pinch-zoom Web pages, which makes it easy to touch-select links on Web pages.

Conclusion: Windows 8 Developer Preview is equal parts fascination and frustration. Rumor has it that Microsoft wants it out for the Christmas shopping season 2012. That means it will have to be finished sometime in October 2012. This is a short development cycle, but it look like they have a good chance of making it usable by then. Check this space for progress.



In a single swipe, pinch-zoom makes it easy to accurately select text links on a Web page.

Door Prizes

Congratulations to all the members who won door prizes at the Main Meeting!

General Drawing:

Alps Glidepoint keypad	George Kornbluth
Edutopia water bottle	Joy Somerville
Leatherette binder	Bill George
Flashlight.....	Michael Wong
PC FM Auto-Scan Radio	Bill Huston
Windows 7 Plain & simple from O'Reilly Media	Sally Holt
Windows 7 The Missing Manual from O'Reilly Media	Chris Yager
Windows 7 The Best of the Official Magazine from O'Reilly Media.....	Paul Rogers

Raffle Prize:

32 GB Patriot Supersonic Xpress USB 3.0 driveJoy Somerville

Door Prize Donations

O'Reilly Media generously donates the books for our door prizes. Go to www.oreilly.com and pick books you'd like to see on our door prize table. E-mail the names and ISBN of the books you want me to request.

Elsie Smith
lcms@pacbell.net

dominique
& co.

HAIR SALON



510.782.7014
20500 C Hesperian Blvd.
Hayward, CA 94541

Family and Cosmetic Dentistry
www.mycastrovalleydentist.com

Timothy Bennett D.D.S.
3209 Castro Valley Blvd. Suite #1
Castro Valley, CA 94546
Phone (510) 881-0620
Naturally Beautiful Smiles
tbennettdentistry@yahoo.com



CARING PET HOSPITAL



SARUP S. MANGAT, D.V.M.
605 Greeley Court
Hayward, CA 94544

Office Hours:
Mon.-Wed. 8:30 am-6 pm
Thurs.-Fri. 8 am-6 pm
Sat. 9 am-2 pm

Telephone: (510) 537-1788
Fax: (510) 537-3103

www.caringpethospital.net

Membership Dues

Regular.....	\$35.00
Family (same household).....	\$45.00
Educational, Seniors.....	\$20.00
Corporate (maximum 5 memberships)...	\$100.00

Make a check payable to PC Community in the amount listed above to:
PC Community
P.O. Box 55513
Hayward, CA 94545-0513

Dues Expiring This Month!

The following members dues expire this month:

Charles Dormann	Don Odle
Jan Fagerholm	Del Parton
Bud Gallagher	Verne Perry
Chuck Horner	Keith Sammons
Christopher Marston	Robert W. Sorenson
Dolly Marston	Don Trimble

Special Interest Group Meetings



Del Parton - (510) 276-4292
delpa@pacbell.net
Saturday after Main Meeting: 8pm



Dan Dolgin - (510) 895-8845
dandolgin7@comcast.net
3rd Monday of the month: 7:30pm
<http://www.pcc.org/mobile>



David Graham - (925) 997-9646
dmgraham98@yahoo.com
3rd Monday of the month: 7:30pm
<http://www.pcc.org/mobile>

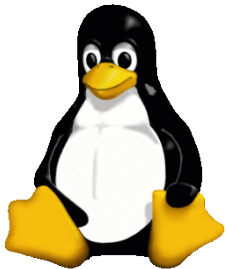


Bud Gallagher - (510) 269-3623
budgall@comcast.net
2nd Saturday of the month: 1pm

Room for more
SIGs here--
start one!



Jan Fagerholm - (510) 213-8421
pcc4me@gmail.com
Last Saturday of the Month: 2pm



The Penguin Partition Linux for Human Beings

by Jan Fagerholm, PCC Penguinista

Ubuntu 11.10, Mint 12, Unity, Gnome 3. All are in place, all are working well, all are ready to increase my productivity.

Productivity, proschmucktivity -- that's no fun. What's a geek to do when there aren't any interesting new developments to destroy productivity?

One doesn't have to look too deep into what we have to find things to distract from work. There is always Update which gives you an excuse for not getting something real done, but lacks the personal satisfaction of feeling like you did something when you change your wallpaper or theme or move the titlebar buttons from the right side to the left.

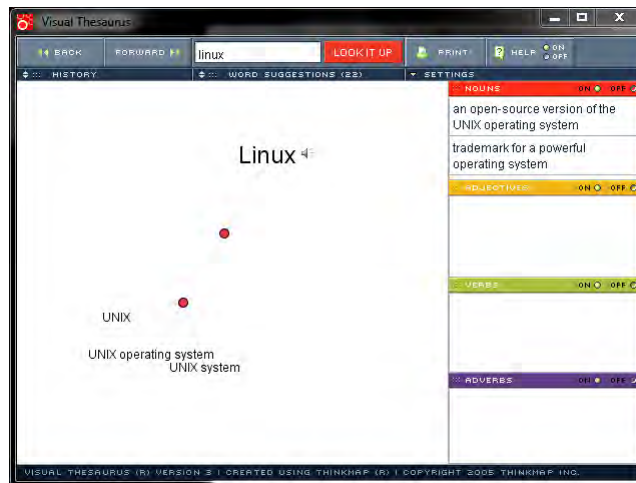
Fortunately for me, I rediscovered something I haven't visited for awhile: WINE.

No, not that -- I have maintained my appreciation of fermented grapes right along, but I mean the Linux project. For those of you that have forgotten, WINE is the recursive geek acronym for WINE Is Not an Emulator, an application layer for Linux that provides Windows underpinnings for Windows apps to run on Linux. Limited

space here, Google it if you don't get it.

One of my favorite writing tools, Visual Thesaurus, underwent a recent update, which made me revisit it on geek terms. It's a Windoze program that creates a visual 3D cloud of synonyms and antonyms that you can grab and rotate to inspect words and select alternatives to (in particular) adjectives, adverbs, synonyms and antonyms to words that you think up that you just know there are more descriptive words for. Oh, sure, word processors have had thesauruses built into them for years, but the visual cloud of something like Visual Thesaurus just enhances the creative experience.

Meanwhile, back at Linux, I had been running a Thistall standalone version of Visual Thesaurus. This time, I took the full Windoze version and attempted to install it with WINE. That is to say, double-click on SETUP.EXE in Linux and see what happens. Much to my surprise, it worked! It started WINE and completed the installation and even put a shortcut in my Linux menus. So I am happily writing this with the assistance of Visual Thesaurus running in Linux. More on WINE will surely follow.





PCC Main and Executive Meeting Highlights

Secretary — Bayle Emlein
pcc@ix.netcom.com

Treasurer — Tom Smith
smith-tf@pacbell.net

Main Meeting Highlights

January 6, 2012

The meeting was called to order at 7:38 p.m. by President Chuck Horner. Harold Smith at the TicketTable has 3" x 5" cards to write questions for discussion/answers at the end of the Meeting. Harold also has door prize tickets and raffle tickets.

We are still looking for a permanent place for the Clubhouse refurbishing project. Sid is preparing his garage to be a temporary base.

The Club needs someone to coordinate presentations, not develop them necessarily. If you are willing to help, please let Chuck know. We also need folks to help with publicity—getting information out around town.

SIG Announcements:

The Windows 7 SIG will meet at Bud Gallagher's at 1 p.m. on the 14th, the customary second Saturday after the Main Meeting. The tentatively scheduled presentation is Troubleshooting Windows Networks. Bud will have the last set of the Mark Liron CD's available for anyone who bought the first three sets of CD's.

The Spectacular Linux SIG meets at 2 p.m. on the last Saturday of the month, January 28. Last month they looked at the new Mint interface. More about Mint this month.

As usual, the Hardware SIG will meet the day after the Main Meeting at 8 p.m. at the Smiths. Come to get help with your hardware or learn how to fix someone else's if your world is running smoothly. Be sure to bring all the documentation you can find. Even when it's a hardware problem, software is usually involved. Call the Smith's if you need directions.

The Mobile SIG will meet the 3rd Monday.

Chuck announced that Bob Kiessling is at Washington Hospital, scheduled for open heart surgery.

Presentations: Diane George showed off her new mobile scanner, the Flip-Pal 100C. It is battery powered (3 AA's) and does not need a computer to operate. The scanning surface is about 4" x 6"; it can be moved around a large picture—including a framed picture—and will stitch the image together. It can upload wirelessly to a computer. It's a hot item for genealogy buffs because of its portability. The light weight and ease of scanning without a computer make it

easy to use in a variety of settings. The list price is \$149.95.

Chuck showed/played a Jawbone Jambox from AT&T, a little black box that amplifies sound from a mobile phone. He really likes the retractable cord on the Music Bullet sound amplifier for his phone.

Chuck's new terabyte HP laptop has Windows 7, causing many adventures in re-learning. Notepad, under Accessories, strips all codes and formatting out of a document. Right clicking or Shift+Click will open additional Notepad windows. Diane mentioned a program called Notepad++ that has tabbed windows. Chuck demonstrated several features in WordPerfect, especially Reveal Codes.

David Graham got an Ice Cream Sandwich (operating system) phone. That's Android operating system a version up from Honeycomb. Ice Cream Sandwich multitasks and allows closure of selected applications. It was designed to be the interface for unified communications.

After the Break: Chuck used a document camera to show some of the things he's been doing with his Android smartphone, which holds a lot more data than his old Palm device. It offers multiple desktops. Menu choices are all available at the top, no diving through menus.

Chuck showed GoRequest, a feature of the AccessHayward community issue reporting application. He showed the quality of the video and several free apps. He likes ColorNote for making lists. He wonders if the GPS function will put Thomas Brothers out of business. The QuickOffice suite wasn't free but it was worth his \$39 for the functionality. Tom Smith asked about the using the keyboard if you have large fingers. That led to the discussion of the many Android keyboard apps. Chuck, who also has large fingers, has no problem with the keyboard on his phone, especially in landscape mode.

Chuck also showed off a 511 Flashlight that operates via capacitors, not batteries. It recharges in 90 seconds. While it costs \$129, there are no more battery costs and it is very bright.

Jan Fagerholm showed off the new HDMI to VGA converter. The document camera and the tablet need to be detected by the projector as it starts up. He demonstrated an Android tablet and then a multi-touch Windows tablet. The Atom processor barely supports Windows, hence the development

Continued on Page 11

Main Meeting Highlights

Continued from page 10

of ultrabooks. The EasyBits graphical interface is more compatible with the tablet environment than a written list is. The menu-based Windows system works better with the addition of a bluetooth keyboard.

The meeting was adjourned at 10:21 p.m.

Respectfully submitted,
Bayle Emlein, Secretary

Executive Committee Meeting Highlights

January 21, 2012

The meeting was called to order at 2:20 pm by President Chuck Horner.

Members present: Bayle Emlein, Jan Fagerholm, Sally Holt, Chuck Horner, Elsie Smith, Tom Smith. Absent: Diane George, Sid Jordan.

The minutes of the December 2011 meeting were approved.

Old Business: Jan is still trying to make the new membership form be an interactive PDF.

President's Report - Chuck Horner: We need a space for the Clubhouse.

Executive Vice President – Sally Holt: Nothing special to report.

Treasurer - Tom Smith: As of January 21, 2012:

Checking Account	\$2,970.59
Total	\$2,970.59

Tom estimates that we have enough funds to last until March of 2013 at our current rate of expenditures.

The proposition of granting dues for service to PCC was revived. Chuck will clarify the request in a President's Podium article.

Secretary - Bayle Emlein: Nothing special to report.

VP Clubhouse - Sid Jordan: Jan has sent Sid the instructions for registering licenses under the RRP Program. Bob Sorensen came representing the Clubhouse. He has located a local copy center that will copy 50 or 75 newsletters for \$75 or \$135. Bob also suggested opting out of mailed newsletters. Chuck suggested revisiting the model in June. Bob will take the new set of RRP licenses to the Clubhouse.

VP Marketing – Position open:

VP Membership - Jan Fagerholm: Member count as of January 21, 2012:

Type	Number	Percent
Regular	29	46.77
Senior	28	45.16
Student	2	3.23
Associate	3	4.84
Total	62	

VP Newsletter - Elsie Smith: Newsletter submission deadline:

January 21, Saturday midnight, February Newsletter
February 18, Saturday midnight, March Newsletter
March 24, Saturday midnight, April Newsletter

It was moved and seconded that PCC members may opt out of receiving the printed version of the Newsletter and can request email notification with the Newsletter as a PDF attachment as it becomes available. When choosing this option email Elsie at LCMS@pacbell.net or Jan at pcc4me@gmail.com. Using email to initiate the transaction will give the Newsletter staff your current email address. The financial and environmental advantages were discussed. In June, the EC will review the desirability of continuing this program.

VP Special Projects - Bayle Emlein: Nothing to report.

Webmaster - Diane George:

Calendar: See the website for the latest updates and changes in SIG meetings.

Remember to check the Web site for the new Clubhouse hours and before going to the Clubhouse on a Saturday.

Programs -

February: Jan would like to present Windows 8.

March: David Graham? Linux? Cybercrime?

Fund Raiser:

February: Viewsonic 8" digital photo frame

March: Wireless mouse

New Business:

2012 Roster of Officers:

President: Chuck Horner

Executive Vice President: Sally Holt

Treasurer: Tom Smith

Secretary: Bayle Emlein

Membership: Jan Fagerholm

Clubhouse: Sid Jordan

Newsletter: Elsie Smith

Special Projects: Bayle Emlein

Marketing: Open

Programs: Open

Non-Voting Positions:

Projector Coordinator: Jan Fagerholm

Webmaster: Diane George

APCUG Rep: Diane George

Refreshments: George Kornbluth

Date and Time of Next Meeting: Saturday, February 18, 2012 at 2:00 p.m., 28924 Ruus Road, Hayward.

The meeting was adjourned at 3:58 p.m.

Respectfully submitted,
Bayle Emlein, Secretary

PC Community
P.O. Box 55513
Hayward, CA 94545-0513



February 2012

Sunday	Monday	Tuesday	Wednesday	Thursday	Friday	Saturday
See Page 9 for SIG Meeting information.			1	2 <i>Groundhog Day</i>	3 7:30 pm Main Meeting	4 8 pm-Hardware SIG
5	6	7	8	9	10	11 1 pm-Windows 7 SIG
12	13	14 <i>Valentine's Day</i>	15	16	17	18 2 pm-Exec. Committee Mtg.
19	20 7:30 pm-Mobile Computing SIG <i>President's Day</i>	21	22	23	24	25 2 pm-Linux SIG
26	27	28	29	Check the calendar at www.pcc.org for up-to-date information!		

The **March 2012 Main Meeting** will be at 28924 Ruus Road, Hayward CA, on **March 2, 2012** at 7:30 P.M.