

Google+, Plus More From The Experts

This month, a dose of tips and tricks.

Search is just Search, but Diane will show us many more ways to use it than plain text.

Diane George PCC's Webmaster, will be here to show us what she has gleaned from exploration of Google and others.

If you are a Google user, you may have noticed the beginning of Google+, a collection of services that integrates many of Google's popular services into a social-oriented user friendly group. That's the tip of the Google icepack, as many of the regular services have developed talents previously unknown. You may think that

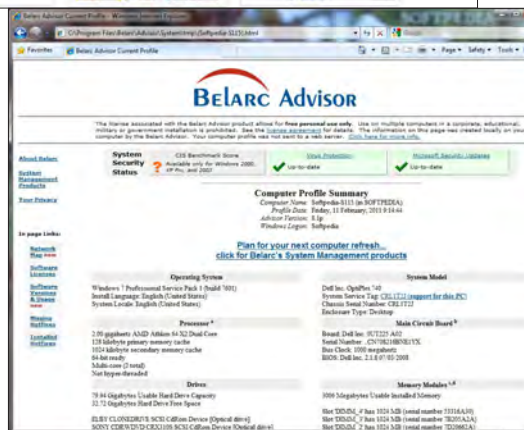


Diane has been a fan of Belarc Advisor for some time, and will show us why it's such a useful tool. Sit up and pay attention, it may save your computer.

Got some Google trick of your own? A utility that you can't live without? Share your knowledge

-- bring it to the Main Meeting and show it off. Bring it on your laptop or netbook so we can all see it.

As always, there'll be good food, good fun and good friends all around. See you there!



Raffle!

This month, a Maxell Wireless Optical Motion Mouse Red. ErgoMotion Optical Mice utilize a patented pivot design to effectively address a user's risk of repetitive stress injuries, such as Carpal Tunnel Syndrome. The pivoting motion is designed so the user's wrist is never in a fixed state. The mouse adapts to the user's natural hand and wrist positions, conforming to the user's dynamic movement, alleviating discomfort and encouraging productivity. PC and Mac compatible. AND, it's YOURS for the price of a ticket.



Tickets are **\$5** each, available where you sign in. Need not be present to win.

What's Inside:

Newsletter Information..... 2	PCC Clubhouse 3	SIG Meetings- Information..... 9
PC Community Officers..... 2	Help Desk 4	Penguin Partition..... 9
About PC Community 2	Power2U AC Wall Outlet..... 6	Main & Exec. Meeting Minutes.....10
PCC Announcements..... 3	Windows 8 Pains 'n' Gains..... 7	PCC Events Calendar.....12
Map & Directions to Main Meeting..... 3	Advertisements..... 8	

About PC Community



EDITOR
Elsie Smith
 lcms@pacbell.net

Associate Editor: Jan Fagerholm

Online Editor: Diane George

Contributors: Bayle Emlein, Jan Fagerholm, Diane George, Chuck Horner and Elsie Smith.

Deadline: Copy must be submitted no later than the second Saturday prior to the Main Meeting. Check the Newsletter calendar for the date. Submissions should be made by e-mail to the Editor, **lcms@pacbell.net**. Advertising rates are available from the Editor.

Contents © 2012 PC Community, except as noted. Permission for reproduction in whole or in part is granted to other computer user groups for internal, non-profit use, provided credit is given to PC Community and to the authors of the material.



Adobe InDesign CS2 is used to publish
 PCC News

PCC Officers and Staff

- President — Chuck Horner**
 churck@comcast.net (510) 589-9677
- Executive Vice President — Sally Holt**
 nole62@pacbell.net (510) 785-3593
- Treasurer — Tom Smith**
 smith-tf@pacbell.net (510) 545-2077
- Secretary — Bayle Emlein**
 pcc@ix.netcom.com (510) 652-1726
- VP Clubhouse — Sidney Jordan**
 sjordan321@aol.com (510) 886-8188
- VP Marketing — New VP Needed**
 you@righthere.com (510) 123-4567
- VP Membership — Jan Fagerholm**
 pcc4me@gmail.com (510) 213-8421
- VP Newsletter — Elsie Smith**
 lcms@pacbell.net (510) 545-2077
- VP Programs — New VP Needed**
 you@righthere.com (510) 123-4567
- VP Special Projects — Bayle Emlein**
 pcc@ix.netcom.com (510) 652-1726
- Webmaster — Diane George**
 digeorge@sbcglobal.net (510) 538-2449
- APCUG Representative — Diane George**
 digeorge@sbcglobal.net (510) 538-2449
- Network Coordinator — Paul Cooper**
 paulc2553@yahoo.com (510) 733-2613
- Projector Coordinator — Jan Fagerholm**
 pcc4me@gmail.com (510) 213-8421

Board of Directors

- Bayle Emlein**
 pcc@ix.netcom.com (510) 652-1726
- Jan Fagerholm**
 pcc4me@gmail.com (510) 213-8421
- Sally Holt**
 nole62@pacbell.net (510) 785-3593
- Chuck Horner**
 churck@comcast.net (510) 589-9677
- Elsie Smith**
 lcms@pacbell.net (510) 545-2077

Clubhouse Information

Please check page 3 for information regarding the Clubhouse. Communication with the Clubhouse should be directed to PC Community, P.O. Box 55513, Hayward, CA 94545-0512.

PC Community is a computer users group for people who wish to expand their knowledge and experience of personal computers and software. This is accomplished through monthly general meetings of the full membership where major industry vendors present information, and through smaller focus groups (Special Interest Groups, or SIGs) where members meet to share common computer interests. The group's monthly Main Meeting takes place at Calvary Baptist Church, 28924 Ruus Road, Hayward, at 7:30 P.M. on the first Friday of each month.

PC Community is dedicated to community service, providing enabling technology to people with special needs, working in the community to obtain computer equipment, and working with other computer groups to help people extend their lives through computer technology.

PC Community has a Web site at <http://www.pcc.org>.

Membership dues are \$35.00 per year. \$20.00 for educational and seniors(65 and over), and \$45.00 for family per year. Call 510-213-8421 for more information, or write to PC Community at the address on this page.



**ICEMAN
 Consulting
 Enterprises,
 Inc.**

Thanks to PCC Member *Chris Yager*,
 ICEMAN Consulting Enterprises, Inc.,
 for printing PCCNews.
 iceman@prado.com - (510) 317-5900



PCC is a member of the Association
 of Personal Computer User Groups
 (APCUG)

PCC Announcements

O'Reilly - Books and Media

Review a Book: Review an O'Reilly book and get published in the PCC Newsletter and on the PCC Web Site. Find a book that interests you at www.oreilly.com, e-mail me the name of the book and ISBN so I can order it for you. PCC requires a deposit from you

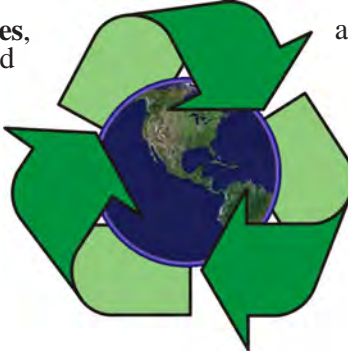


in the amount of the User Group price, a 35% discount. You have 60 days to complete the review, at which time the deposit is refunded and you keep the book.

Elsie Smith - PCC UG Representative to O'Reilly
lcms@pacbell.net or 510-545-2077

PCC Recycle Program is Back, Bigger and Better!

Your used **toner cartridges**, old **cell phones**, used **inkjet cartridges**, old **PDA's** and defunct **iPods** are valuable. Don't toss them in your trash to be used as landfill. They are worth something to PCC and other groups, either in the form of exchange or as discount on products at some local retailers. This not only helps PCC, but also helps our community. You can drop



any of these items off at a Main Meeting or an EC Meeting. Do your part for PCC and your community! Keep the environment clean by taking a few extra moments to recycle these items with PCC.

contact:
Chuck Horner
churchk@comcast.net
510-589-9677

Directions to the PCC Main Meeting

From All Directions: take 880 to the Tennyson Road exit in Hayward. Take the exit toward the hills. Proceed northeast on Tennyson Rd. about 0.7 mile to the 5th stoplight. This will be Ruus Road.

Turn right on Ruus Road and proceed southeast for about 0.4 mile. Look for Calvary Baptist Church on your left.

Turn left into the driveway into the parking lot. Parking is available anywhere from the driveway to the back of the lot.

Look for the PCC signs.



PCC Clubhouse Seeking House!

PCC's Clubhouse is temporarily without a -- house. With extraordinary effort, Clubhouse VP **Sid Jordan** and clubhouse regulars **Tony Cozzette, Don Feist, Bruce Hevelin, Charles Landsmerer, Bob McGeary, Del Parton, Ted Rosaro, AC Robinson, and Michael Wong** cleared out years of accumulation and took it to the recycle center for cash. Their efforts added \$800 to PCC's finances.

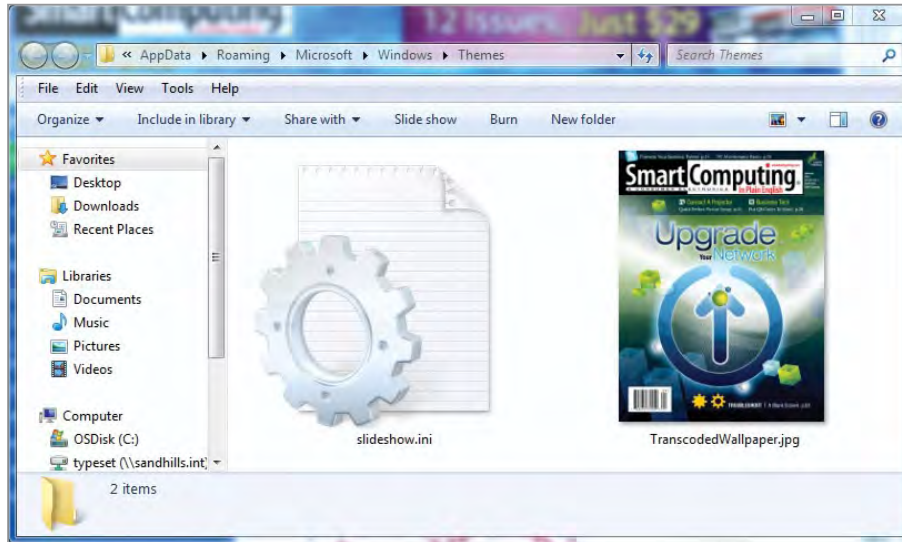
That's the good news. The bad news is that the Clubhouse is temporarily homeless. We are working on a temporary

location from which the refurbishing activities can continue, but we are still seeking a larger facility from which the Clubhouse's full set of activities can continue. We are setting up a contact phone number where you can call and find out about Clubhouse progress.

If you know of a facility that can house our Clubhouse, (think of the old Clubhouse for size) contact anyone on the Executive Committee and let them know. Contact information for the E.C. is on page 2 of this Newsletter, or go to www.pcc.org and click on Contact Us.

Tips From The Help Desk

Common Tech Questions



Copyright by Sandhills Publishing Company 2011. All rights reserved. Visit <http://www.smartcomputing.com>

A damaged TranscodedWallpaper.jpg file may be causing your Desktop background woes. It's an easy fix.

QUESTION:

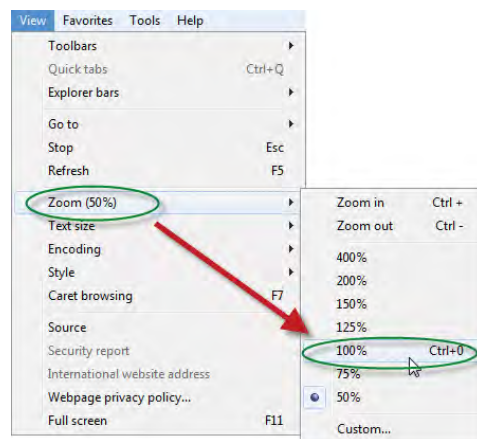
When I try to choose a background image in the Control Panel, the checkboxes next to my pictures don't work.

A: There are several problems that can cause this symptom. (Related symptoms are a black background and this error message: "This image can't be set as wallpaper. An internal error occurred.") A simple setting may be to blame, or Windows may have a damaged TranscodedWallpaper.jpg file.

Start troubleshooting by checking your settings. Click the Start button and then click Control Panel. When the panel opens, click Ease Of Access. Click Ease Of Access Center. Now, scroll down to Make The Computer Easier To See and click it. Scroll down to Remove Background Images and uncheck its checkbox. Click OK.

If the checkbox was already clear, it's time to help Windows create a new TranscodedWallpaper.jpg file. Click the Start button and then enter this path into the Search field: %USERPROFILE%\AppData\Roaming\Microsoft\Windows\Themes\ and then press the ENTER key. The Themes folder will open, displaying two icons: Slideshow.ini and TranscodedWallpaper.jpg. Right-click TranscodedWallpaper.jpg and then click Rename. Select JPG and replace it with OLD. Windows won't recognize the file and will create a new one after

you close Windows Explorer—but don't close it quite yet. First, open the Slideshow.ini file and delete any text that appears in it. Now, you're ready to close Windows Explorer. At this point, you should be able to select images for the Desktop background without trouble. If the problem persists, see additional tips at support.microsoft.com/kb/2504610. ■

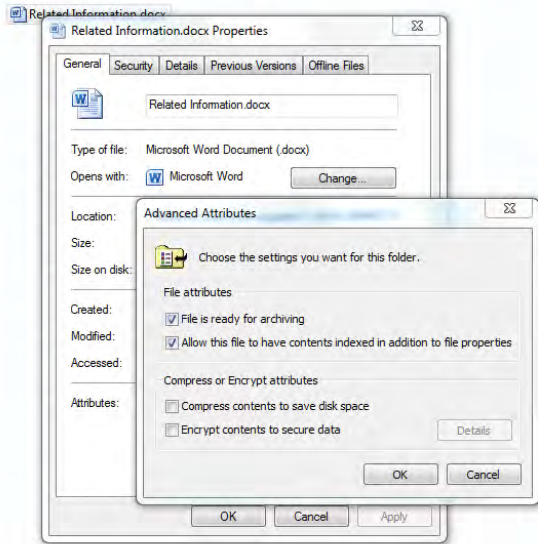


If you accidentally zoom out (or in) while surfing the Web, use your browser's Zoom settings to return the Web page to its original size.

QUESTION:

The text on the main page of my favorite website is suddenly so tiny that I can't read it. What happened?

A.: Chances are, you were using your mouse scroll wheel to scroll through the page when you accidentally pushed the CONTROL key. You can return the page to the right size by pressing CONTROL again and scrolling the mouse wheel up. Another way to fix it is to set the Zoom setting to 100%. In Internet Explorer, click View, Zoom, 100%. In Chrome, click the wrench icon and then enter 100 next to Zoom. **|**



Use the Properties menu to determine whether you have permission to open a troublesome file.

QUESTION:

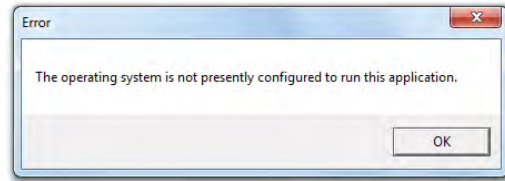
I tried to open a document and received an error message that reads "Access denied." How can I open it?

A.: If you're getting an "Access denied" message, someone has likely configured the file or Windows so that the file is protected. You'll probably need to talk to your administrator to get this resolved, but you can at least determine which issue is causing the message: a missing encryption certificate or a missing permission.

To check the encryption status of the file, right-click it, click Properties, and then click Advanced on the General tab. Take a look at the checkbox next to Encrypt Contents To Secure Data. If it's checked, your administrator (or the person who encrypted the file) will need to give you a certificate.

To check the file's permission status, right-click the file again, click Properties, and then click the Security tab. Select your name and then look for a check mark next to

Read. If Read is clear, you'll need to see the administrator to get permission to open the file. For more info, visit tinyurl.com/7ceb6py. **|**



If you're having trouble opening a Word document, you may need to change Word's compatibility settings.

QUESTION:

When I open Microsoft Word, a message asks me if I want to make changes. Nothing happens if I click no (and Word doesn't open). Should I click Yes?

A.: If you click Yes, you'll likely see an error message, such as "Run-Time Error 429" or "The operating system is not presently configured to run this application." To solve this problem, click the Start button and then type **Word** in the Search field. When Word appears in the list, right-click it and click Properties. When the Properties window appears, uncheck the box next to Run This Program In Compatibility Mode For and then click OK. **|**

BUYER'S GUIDE TOPICS

Each *Smart Computing* issue includes tips, reviews, and information about a variety of topics. However, each issue also has a featured group of articles about a selected topic. Below is a list of topics from the previous year. As a *Smart Computing* subscriber, you have access to all of our archived articles at www.smartcomputing.com.

March	2011	Backup For Home & Office
April	2011	Solve Software Errors
May	2011	Update Your Website
June	2011	Small & Home Office Security
July	2011	PC Maintenance
August	2011	Mobile Computing
September	2011	Technology Troubleshooting Guide
October	2011	The Small Office Server
November	2011	Affordable Office Tech
December	2011	Tuneup Utilities 2012
January	2012	Upgrade Your Network
February	2012	Laptops & Security Software

Power2U AC Wall Outlet with USB Charging Ports

by Bayle Emlein, PCC Secretary

Now that I run my life via gadgets and I'm wireless, I spend half my time updating and downloading. The other half is spent looking for the power to keep my lifestyle going. Enter Newer Technologies with the Power2U AC outlet, a standard grounded two-socket wall outlet with two USB ports that can be used for charging.

When I first started playing with Macintosh computers in the 1980's, Newer Technologies were making gadgets and gizmos that improved the computing experience or just made things more interesting and fun. They're still doing so.

Enter Newer Tech with the Power2U outlet, an easy way to wire my house to charge my USB gear without booting my computer. Or, as in my case, without having to figure out what USB device to pull out to free up a USB port for charging.

The Power2U unit is a substitute wall outlet. That means that one must replace an existing outlet. Short of replacing all, or several, this involves some consideration about which outlet would be most convenient and accessible for charging, as well as which outlet is accessible for swapping. In brand new construction, no problem. In my cluttered, busy world full of racks and bookcases and shelving and cabinets, the choices were automatically narrowed considerably. Don't want a charging station near the cat dishes, either. Ooh, wires -- yum!

Fortunately, the receptacle I settled on is in the New Part of my house, upgraded to code at the very end of the 20th Century. The Old Part of my house was built about a century before and wired around the time of the Great War. The knob-and-tubing wiring was replaced mid-century, but the wall receptacles remained unimproved and shallow. Narrowly averting another major home improvement project, with some well-aimed pushing and shoving and folding of wires the receptacle space in the New Section was just big enough to accommodate the extra depth of the Power2U, needed because

of the extra USB electronics. I haven't had so much fun installing an add-on since the days of firmware cards for Apple IIe.

The instructions to the Power2U come printed in a reasonably-sized font on both sides of a single 8.5" x 11" sheet. They start off with a warning that failure to proceed correctly can result in permanent injury or death and that all local and national electrical codes must be observed. Not every installation will include the challenge of a building wired in two distinct eras, with several circuits helpfully labeled "lights and plugs." But anyone who's willing to wade into Real Warfare Northern Crusades or join Men Of War Red Tide will charge right ahead into the reality version of home wiring. Fortunately I had a live expert willing to make a house call on New Years Eve day. Adding to the challenges in the higher levels of the Installation Game: the screws for attaching the wires to the Power2U could have been about 2 mm longer without damaging the equipment but giving the electrician a chance to capture the wire without invoking every four-letter technical term in two languages.

I now have one Power2U installed. We (tech support and me) won this round, and as any gamer knows as long as

you win it's worth the play. Short of a highly unlikely repeat of last century's major renovation project, I probably will quit while I'm ahead. But if I'm ever looking at remodeling or building again, I will certainly want to know if Newer Technology offers a contractor's discount or bulk sales. This little gizmo adds more than its cost in benefit and is one more step in making my computing life about getting something done rather than managing the stuff needed to get something done.

I certainly hope Newer Technology is marketing to the hotel chains where I stay. Those folks do remodel on a frequent basis, and finding a Power2U outlet in my room would persuade me I'd landed in the luxury suite. For a quick upgrade to your own environment, think about adding a Power2U receptacle.

Product Information

Power2U

AC wall outlet with USB charging ports



Newer Technology
2650 Bridge Lane,
Woodstock, IL 60098

800-275-4576 www.newertech.com



Windows 8

Windows 8 Pains 'n' Gains

Notes From The Bleeding Edge. . .

by Jan Fagerholm, PCC Pain Reliever

Windows 8 news is slight this month. After the rollout of the Developer's Preview pre-beta last month, things have slowed down to a trickle.

There are several Web sites out there that do nothing but report on Windows beta news. They have been reduced to leaking images of the wallpaper from the upcoming.

Lest you think that Windows 8 is just a polishing of Windows 7, let me reiterate some of the major changes to and around Windows that will make this release very different.

First and foremost, Windows 8 will run on both the x86/AMD64 platforms and additionally will run on the ARM processor. For those of you that don't speak silicon, that means that it will run on most of the smartphones out there, as well as several current and slated-for-production tablets. Recently, at the BUILD Windows 8 conference, Texas Instruments (largest seller of ARM processors), nVidia, and Qualcomm showed reference designs of upcoming tablets, based on their versions of the ARM processor, running Windows 8. This was no hands-on demo, as all these devices were handled only by Microsoft reps demonstrating only a few functions. This led to speculation that development on the ARM processor is somewhat behind the x86 version, but this comes as no surprise. After all, the x86 version is based on Windows 7, which already works. (According to Microsoft sources, anyway. . .)

Moving on, my own hands-on experience shows crawling improvement. While security updates continue to stream in daily through Windows Update, there have been only 2 updates to the system in the last month. One shouldn't expect much change to the x86 code though, as the

desktop version is going to remain largely Windows 7. The tablet computer I'm running this on has an Intel Atom N470 CPU (64-bit), so the underpinnings are pretty much Windows 7. The Metro interface works fairly well, but the

response is not as good as an Android tablet. Using a tablet with a multi-touch screen lets me play with Metro's touch interface, which is the whole point of Windows 8. On a regular PC, there is no way to take advantage of the principle features of Metro.

Of more than passing interest is the upcoming Windows-To-Go, a USB version of Windows that runs from a flash drive. Yes, I know, there are hacks around

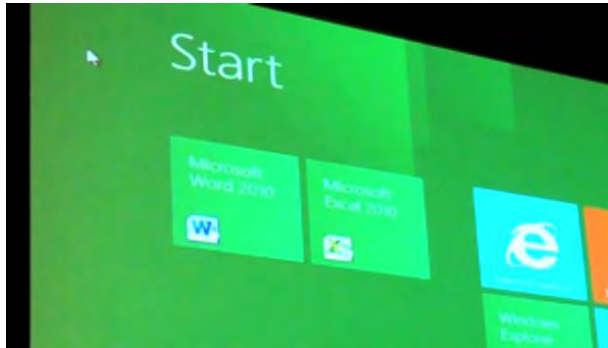
right now that will let you install and run Windows from a flash drive, but this version is from Microsoft, and will allow you to install applications and customize the system same as you can on a conventional hard drive installation. This would let you carry around your own personal desktop and plug it into any Windows compatible computer, boot and run it.

Lastly, following in the footsteps of Apple, Microsoft is developing a Windows Apps Store, an online way to buy and install Metro apps for the Metro interface. This is clearly slated for the tablet/smartphone crowd;

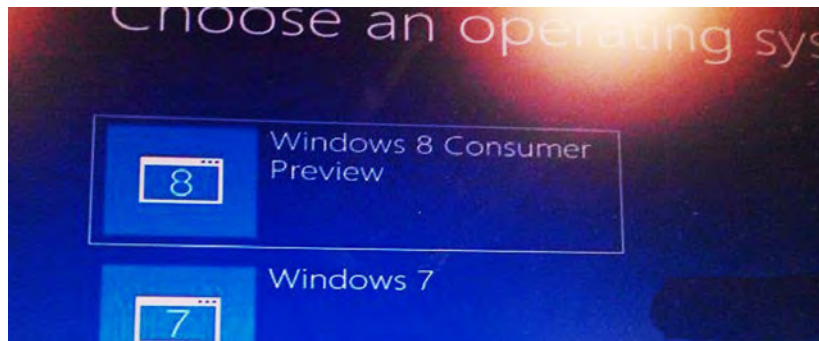
it's unclear if conventional desktop applications will be available through the Windows Apps Store.

Reports are that Windows 8 Consumer Preview (Microsoft just can't seem to spell "beta") has been released to enterprise customers for evaluation, and that the rest of us may get to see it by the end of February. It's supposed to be Build 8250, up from Developer Preview Build 8102, so theoretically should show some improvements.

Oh, yeah-- did I mention Internet Explorer 10? More later.



Windows-To-Go -- can you tell it's a USB flash drive?



Consumer Preview previewed

Door Prizes

Congratulations to all the members who won door prizes at the Main Meeting!

General Drawing:

Card case.....	Elsie Smith
CE Steps Fitness Challenge water bottle	Bayle Emlein
Enercell iDevice portable power.....	Bud Gallagher
HDMI tee shirt	Dan Peterson
How to Play Harmonica.....	John Yamada
Ionic Power watch.....	Bill Huston
Microsoft BackOffice zipper binder	Bob Sorensen
Serve cap.....	Andrew Tews
Xircom mini tool kit.....	Joy Somerville

Raffle Prize:

ViewSonic 8 inch Digital Photo Frame Bayle Emlein

Door Prize Donations

O'Reilly Media generously donates the books for our door prizes. Go to www.oreilly.com and pick books you'd like to see on our door prize table. E-mail the names and ISBN of the books you want me to request.

Elsie Smith
lcms@pacbell.net

dominique
& co.

HAIR SALON



510.782.7014
20500 C Hesperian Blvd.
Hayward, CA 94541

Family and Cosmetic Dentistry
www.mycastrovalleydentist.com

Timothy Bennett D.D.S.
3209 Castro Valley Blvd. Suite #1
Castro Valley, CA 94546
Phone (510) 881-0620
Naturally Beautiful Smiles
tbennettdentistry@yahoo.com



CARING PET HOSPITAL

SARUP S. MANGAT, D.V.M.
605 Greeley Court
Hayward, CA 94544

Office Hours:
Mon.-Wed. 8:30 am-6 pm
Thurs.-Fri. 8 am-6 pm
Sat. 9 am-2 pm

Telephone: (510) 537-1788
Fax: (510) 537-3103
www.caringpethospital.net

Membership Dues

Regular.....	\$35.00
Family (same household).....	\$45.00
Educational, Seniors.....	\$20.00
Corporate (maximum 5 memberships)...	\$100.00

Make a check payable to PC Community in the amount listed above to:
PC Community
P.O. Box 55513
Hayward, CA 94545-0513

Dues Expiring This Month!

The following members dues expire this month:

John Cordeniz
Sidney T. Jordan
Patrick O'Sullivan

Special Interest Group Meetings



Del Parton - (510) 276-4292
delpa@pacbell.net
Saturday after Main Meeting: 8pm



Dan Dolgin - (510) 895-8845
dandolgin7@comcast.net
3rd Monday of the month: 7:30pm
<http://www.pcc.org/mobile>



David Graham - (925) 997-9646
dmgraham98@yahoo.com
3rd Monday of the month: 7:30pm
<http://www.pcc.org/mobile>

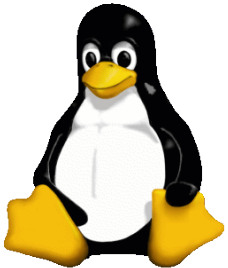


Bud Gallagher - (510) 269-3623
budgall@comcast.net
2nd Saturday of the month: 1pm

Room for more
SIGs here-
start one!



Jan Fagerholm - (510) 213-8421
pcc4me@gmail.com
Last Saturday of the Month: 2pm



The Penguin Partition Linux for Human Beings

by Jan Fagerholm, PCC Penguinista

One of the questions that I get asked a lot is, "can I run QuickCrash (or some other Windoze program) in Linux?" The short answer is no, Windoze applications are not compatible with Linux, or any other OS for that matter.

Not that it hasn't been tried, though. Two efforts that have limited success are the WINE open source project (WINE Is Not an Emulator) and its commercial offspring Crossover Office. Crossover Office elevates itself by concentrating on providing Microsoft Office compatibility with Linux, with some success through MS Office 2003.

Many small applications run successfully on WINE that is provided with most Linux distributions these days. Notable successes are Skype and Teamviewer, both of which I use regularly. Forget about CorelDRAW or Photoshop, though, as their complexity has not been encompassed by WINE or Crossover yet.

So, what's a dedicated penguinista to do when faced with the necessity of using the occasional high-end Windoze program? Enter VirtualBox.

VirtualBox is a virtual machine program that acts like a PC inside the operating system. What it allows you to do is install Windoze inside it, then run Windoze

and your Windoze programs inside of Linux.

Sidestepping the issue of the extra hardware resources required to do this, I'll just say that Virtualbox will run successfully on most modern PCs. The downside is that you need to install Windoze inside VirtualBox just like installing it on a hardware PC. This means tax, license, and Micro\$oft tax.

Once this is done, you may run any Windoze application as though it were on a physical PC. You may also exchange information via the clipboard, flash drives, and other methods between the Virtualbox client OS and the Host OS, much the same as exchanging information between two physical PCs.

If you've ever had an urge to try Linux on a Windoze box without the technohassles of partitioning and boot managers, Virtualbox is a simple and painless way to try Linux without messing with your Windoze installation. Oh, yeah, Virtualbox runs Apple OS-X also.

VirtualBox is an open source program and comes bundled with most Linux distros these days. It solves the problem of "I can't live without my QuickCrash Windoze program" on Linux and others.





PCC Main and Executive Meeting Highlights



Secretary — Bayle Emlein
pcc@ix.netcom.com

Treasurer — Tom Smith
smith-tf@pacbell.net

Main Meeting Highlights

February 3, 2012

The meeting was called to order at 7:45 p.m. by Executive Vice President Sally Holt. Harold Smith at the Ticket Table has 3" x 5" cards to write questions for discussion/answers at the end of the Meeting. New and renewing members see Jan. Remember to get your door prize tickets and raffle tickets from Harold. The raffle prize this month is a ViewSonic 8 inch Digital Photo Frame, with 4:3 Ratio and Slideshow capability.

We are still looking for a permanent place for the Clubhouse refurbishing project.

The Club needs someone to coordinate presentations, not develop them necessarily. If you are willing to help, please let Chuck know. We also need folks to help with publicity—getting information out around town, putting Newsletters in businesses, libraries, etc.

SIG Announcements:

The Windows 7 SIG will meet at Bud Gallagher's at 1 p.m. on the 11th, the customary second Saturday after the Main Meeting. The tentatively scheduled presentation is Trouble-shooting Windows Networks. The last set of the Mark Liron CD's is available for SIG members who have not yet gotten theirs.

The Spectacular Linux SIG meets at 2 p.m. on the last Saturday of the month, February 25. Some creative solutions to the new Gnome interface are being developed. A look at some of those, plus any Linux projects that anyone brings in.

As usual, the Hardware SIG will meet the evening after the Main Meeting at 8 p.m. at the Smith's. Come to get help with your hardware or learn how to fix someone else's if your world is running smoothly. Be sure to bring all the documentation you can find. Even when it's a hardware problem, software is usually involved. Call the Smith's if you need directions.

Elsie Smith noted the needs that PCC has, as noted in the Newsletter. Anyone preferring to get their Newsletter as a PDF only can arrange to do so by emailing Jan Fagerholm and Elsie. A correct, updated email address is essential.

This led to a discussion of the relative advantages of electronic and paper distribution of newsletters.

Presentations: Jan Fagerholm demonstrated the developer preview version of Windows 8. Windows 8 is designed as a tablet interface. Microsoft is trying to catch up with the tablet market. Current Windows applications do not run on any of the popular tablets. The few Windows tablets on the market run poorly because they do not have the power to run Windows 7. Over the years Windows operating systems have demanded more and more power and Intel has developed more powerful processors. On the demo tablet, Windows 8 started in 1/3 of the time it takes Jan's 3GHz desktop. At this point in time, the installation process automatically uses your WindowsLive password and cannot be changed, a caution that may or may not get fixed in the final release. Many of the Metro (the current name for Windows 8) buttons/tiles don't connect to software yet. The way one accomplishes a 'right click' on a button is to press-and-hold. Buttons react by tipping towards an edge that is touched. This indicates that eventually context-dependent menus may materialize.

While one can run traditional applications in Windows 8, the tablet interface is not very friendly for desktop application menus and interfaces, such as office suites. Stay tuned to find out if the desktop version will be identical with the tablet version. In the pre-release version, the wireless and Bluetooth connectors don't yet work reliably. The tablet convention of pinch-zoom gestures to change screen magnification works in some places so far. The Start Button goes to the Metro Interface (the desktop tile interface). Dragging up from the lower left corner brings up the equivalent of the basic Start/Control Panel menu. Tap the Start Button to go to the Metro Interface.

After the Break: Sally introduced the 2012 Executive Committee:

President: Chuck Horner
Executive Vice President: Sally Holt
Treasurer: Tom Smith
Secretary: Bayle Emlein
Membership: Jan Fagerholm
Clubhouse: Sid Jordan
Newsletter: Elsie Smith

Main Meeting Highlights

Continued from page 10

Special Projects: Bayle Emlein

Marketing: Open

Programs: Open

Non-Voting Positions

Projector Coordinator: Jan Fagerholm

Webmaster: Diane George

APCUG Rep: Diane George

Refreshments: George Kornbluth

There were no Questions for the Experts.

The meeting was adjourned at 9:40 p.m.

Respectfully submitted,

Bayle Emlein, Secretary

Executive Committee Meeting Highlights

February 18, 2012

The meeting was called to order at 2:12 p.m. by President Chuck Horner. Members present: Bayle Emlein, Jan Fagerholm, Diane George, Sally Holt, Chuck Horner, Sid Jordan, Elsie Smith, Tom Smith.

The minutes of the January 2012 meeting were approved.

Old Business: Diane will take on the responsibility of creating a new membership form as an interactive PDF.

President's Report - Chuck Horner: We still need a space for the Clubhouse.

Chuck is working on more business cards and a sign-in sheet for the main meeting to maintain current email addresses.

Executive Vice President - Sally Holt: No report.

Treasurer - Tom Smith: As of February 18, 2012:

Checking Account	\$2,857.59
Total	\$2,857.59

Secretary - Bayle Emlein: Nothing to report.

VP Clubhouse - Sid Jordan: Sid came seeking clarification about the RRP program. Jan will work with him on this.

VP Marketing – Position open:

VP Membership - Jan Fagerholm: Member count as of February 18, 2012.

Type	Number	Percent
Regular	27	45.00
Senior	27	45.00
Student	2	3.33
Associate	4	6.67
Total	60	

VP Newsletter - Elsie Smith: Submission deadline:

February 18, Saturday midnight, March Newsletter

March 24, Saturday midnight, April Newsletter

We can ask members to verify their email addresses as they sign in at the main meeting to keep the database current.

The current method of printing the Newsletter, by member Chris Yager, is still the most cost-effective option.

VP Special Projects - Bayle Emlein: Nothing special to report.

Webmaster - Diane George:

Calendar: See the Web site for the latest updates and changes in SIG meetings.

Diane is investigating ways to make the Web site more interactive. Stay tuned.

Programs -

March: Diane George: Google Hang Out; tips, bargains and good sites.

Sally will check to see if APCUG Webinars can be recorded for time-delayed playback.

Fund Raiser:

March: Red Maxell Wireless Ergonomic Optical Motion Mouse.

New Business: The Southwest Computer Conference will take place in San Diego June 21-24, 2012. More information at <http://www.theswcc.org/registration/registration.htm>.

Important dates:

Digital Photo Contest Deadline – 5/11/12

Early Bird Registration Ends – 5/21/12

Hotel Conference Rate Through – 5/26/12

Elsie wondered how to address the issue of people attending main meetings and/or SIG meetings long after their membership has expired. One solution is to maintain a sign-in sheet at each SIG. Elsie will follow up via mail when she notices lapsed members.

Date and Time of Next Meeting: Saturday, March 17, 2012 at 2:00 p.m., 28924 Ruus Road, Hayward.

The meeting was adjourned at 3:06 p.m.

Respectfully submitted,
Bayle Emlein, Secretary





March 2012

Sunday	Monday	Tuesday	Wednesday	Thursday	Friday	Saturday
Check the calendar at www.pcc.org for up-to-date information!			See Page 9 for SIG Meeting information.	1	2 7:30 pm Main Meeting	3 8 pm-Hardware SIG
4	5	6	7	8	9	10 1 pm-Windows 7 SIG
11	12	13	14	15	16	17 2 pm-Exec. Committee Mtg. <i>St. Patrick's Day</i>
18	19 7:30 pm- Mobile Computing SIG	20	21	22	23	24
25	26	27	28	29	30	31 2 pm-Linux SIG

The April 2012 Main Meeting will be at 28924 Ruus Road, Hayward CA, on April 6, 2012 at 7:30 P.M.