

## PCC Needs To Hear From You!

**pcc**

*This month we're holding off on the regular presentation in order to discuss with you, the members, some serious business about PCC.*

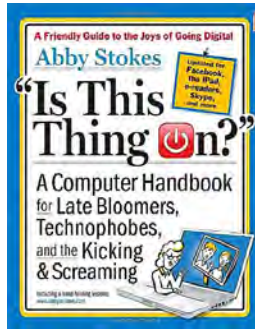
*We've spoken in recent times about the financial situation that we are going through and have related how the Executive Committee is dealing with it. But we are facing the part of the life cycle that many groups like ours have faced. Membership is declining, and so is revenue.*

*We have remained viable largely because most of the cost of doing business is covered by volunteer work. There are, however, some expenses that we can't volunteer our way out of. We want your feedback on what is important to you, and how we can continue to provide these services.*

*This is not a doom-and-gloom session. We simply have to deal with some financial realities and we need your input. Be there and make your voice heard.*

### Preview of December Main Meeting - Abby Stokes

*How to Navigate the Ever Changing Landscape of Technology - The digital divide widens with the rapid pace of new innovations and gadgets. What is out there and how it might benefit you can be lost in all the tech talk. Abby Stokes, author of the best-selling "Is This Thing On?" will be with us via Webinar to help us "digital immigrants" networking.*



*(those baby boomers and beyond not born with a keyboard and mouse in hand) understand what everyone is talking about and how to decide what might work best for you from tablets and gadgets to social*



**HEY YOU! Yes, YOU! PCC Elections are coming in December, and its up to YOU to vote and make your voice heard. Details and procedures inside on page 11.**

**Raffle!**

This month, a Corsair CMFVY3S-32GB Flash Voyager USB 3.0 Flash Drive. Experience the true meaning of storage mobility with the Corsair CMFVY3S-32GB Flash Voyager USB 3.0 Flash Drive. The Corsair features an ample storage capacity of 32GB, perfect for bringing your important files with you. Its all-rubber design is ultimately durable, and since accidents can happen, the Corsair CMFVY3S-32GB Flash Voyager USB 3.0 Flash Drive is water-resistant for a worry-free transport of your valuable data. AND, it's YOURS for the price of a ticket.

Tickets are **\$5** each, available where you sign in. Need not be present to win.



### What's Inside:

|   |  |                                      |
|---|--|--------------------------------------|
| Newsletter Information..... 2           | PCC Clubhouse ..... 3                    | Advertisements..... 8                |
| PC Community Officers..... 2            | Free Up Hard Drive Space ..... 4         | SIG Meetings-Information..... 9      |
| About PC Community ..... 2              | Free Up Hard Drive Space (cont'd)..... 5 | Penguin Partition..... 9             |
| PCC Announcements..... 3                | Free Up Hard Drive Space (cont'd)..... 6 | Main & Exec. Meeting Minutes..... 10 |
| Map & Directions to Main Meeting..... 3 | Windows Lifecycle..... 7                 | PCC Events Calendar..... 12          |

## About PC Community



**EDITOR**  
**Elsie Smith**  
 lcms@pacbell.net

**Associate Editor: Jan Fagerholm**

Online Editor: Diane George

Contributors: Bayle Emlein, Jan Fagerholm, Diane George, Chuck Horner and Elsie Smith.

Deadline: Copy must be submitted no later than the second Saturday prior to the Main Meeting. Check the Newsletter calendar for the date. Submissions should be made by e-mail to the Editor, **lcms@pacbell.net**. Advertising rates are available from the Editor.

Contents © 2012 PC Community, except as noted. Permission for reproduction in whole or in part is granted to other computer user groups for internal, non-profit use, provided credit is given to PC Community and to the authors of the material.



Adobe InDesign CS2 is used to publish  
 PCC News

### PCC Officers and Staff

- President — Chuck Horner**  
 churck@comcast.net (510) 589-9677
- Executive Vice President — Sally Holt**  
 nole62@pacbell.net (510) 785-3593
- Treasurer — Tom Smith**  
 smith-tf@pacbell.net (510) 545-2077
- Secretary — Bayle Emlein**  
 pcc@ix.netcom.com (510) 652-1726
- VP Clubhouse — Sidney Jordan**  
 sjordan321@aol.com (510) 886-8188
- VP Marketing — New VP Needed**  
 you@righthere.com (510) 123-4567
- VP Membership — Jan Fagerholm**  
 pcc4me@gmail.com (510) 213-8421
- VP Newsletter — Elsie Smith**  
 lcms@pacbell.net (510) 545-2077
- VP Programs — New VP Needed**  
 you@righthere.com (510) 123-4567
- VP Special Projects — Bayle Emlein**  
 pcc@ix.netcom.com (510) 652-1726
- Webmaster — Diane George**  
 digeorge38@hotmail.com (510) 538-2449
- APCUG Representative — Diane George**  
 digeorge38@hotmail.com (510) 538-2449
- Network Coordinator — Paul Cooper**  
 paulc2553@yahoo.com (510) 733-2613
- Projector Coordinator — Jan Fagerholm**  
 pcc4me@gmail.com (510) 213-8421

### Board of Directors

- Bayle Emlein**  
 pcc@ix.netcom.com (510) 652-1726
- Jan Fagerholm**  
 pcc4me@gmail.com (510) 213-8421
- Sally Holt**  
 nole62@pacbell.net (510) 785-3593
- Chuck Horner**  
 churck@comcast.net (510) 589-9677
- Elsie Smith**  
 lcms@pacbell.net (510) 545-2077

### Clubhouse Information

Please check page 3 for information regarding the Clubhouse. Communication with the Clubhouse should be directed to PC Community, P.O. Box 55513, Hayward, CA 94545-0512.

PC Community is a computer users group for people who wish to expand their knowledge and experience of personal computers and software. This is accomplished through monthly general meetings of the full membership where major industry vendors present information, and through smaller focus groups (Special Interest Groups, or SIGs) where members meet to share common computer interests. The group's monthly Main Meeting takes place at Calvary Baptist Church, 28924 Ruus Road, Hayward, at 7:30 P.M. on the first Friday of each month.

PC Community is dedicated to community service, providing enabling technology to people with special needs, working in the community to obtain computer equipment, and working with other computer groups to help people extend their lives through computer technology.

PC Community has a Web site at <http://www.pcc.org>.

Membership dues are \$35.00 per year. \$20.00 for educational and seniors(65 and over), and \$45.00 for family per year. Call 510-213-8421 for more information, or write to PC Community at the address on this page.



**ICEMAN  
 Consulting  
 Enterprises,  
 Inc.**

Thanks to PCC Member *Chris Yager*,  
 ICEMAN Consulting Enterprises, Inc.,  
 for printing PCCNews.  
 iceman@prado.com - (510) 317-5900



PCC is a member of the Association  
 of Personal Computer User Groups  
 (APCUG)

---

# PCC Announcements

## O'Reilly - Books and Media

---

**Review a Book:** Review an O'Reilly book and get published in the PCC Newsletter and on the PCC Web Site. Find a book that interests you at [www.oreilly.com](http://www.oreilly.com), e-mail me the name of the book and ISBN so I can order it for you. PCC requires a deposit from you



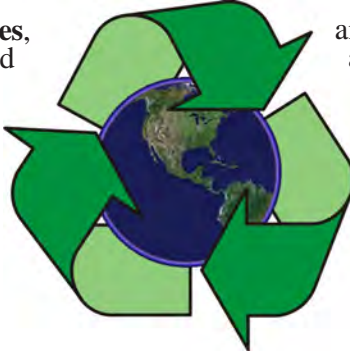
in the amount of the User Group price, a 35% discount. You have 60 days to complete the review, at which time the deposit is refunded and you keep the book.

Elsie Smith - PCC UG Representative to O'Reilly  
[lcms@pacbell.net](mailto:lcms@pacbell.net) or 510-545-2077

---

## PCC Recycle Program is Back, Bigger and Better!

Your used **toner cartridges**, old **cell phones**, used **inkjet cartridges**, old **PDA's** and defunct **iPods** are valuable. Don't toss them in your trash to be used as landfill. They are worth something to PCC and other groups, either in the form of exchange or as discount on products at some local retailers. This not only helps PCC, but also helps our community. You can drop



any of these items off at a Main Meeting or an EC Meeting. Do your part for PCC and your community! Keep the environment clean by taking a few extra moments to recycle these items with PCC.

contact:  
**Chuck Horner**  
[churchk@comcast.net](mailto:churchk@comcast.net)  
510-589-9677

---

## Directions to the PCC Main Meeting

**From All Directions:** take 880 to the Tennyson Road exit in Hayward. Take the exit toward the hills. Proceed northeast on Tennyson Rd. about 0.7 mile to the 5th stoplight. This will be Ruus Road.

Turn right on Ruus Road and proceed southeast for about 0.4 mile. Look for Calvary Baptist Church on your left.

Turn left into the driveway into the parking lot. Parking is available anywhere from the driveway to the back of the lot.

Look for the PCC signs.



---

## PCC Clubhouse Seeking House!

PCC's Clubhouse is temporarily without a -- house. With extraordinary effort, Clubhouse VP **Sid Jordan** and clubhouse regulars **Tony Cozzette, Don Feist, Bruce Hevelin, Charles Landsmerer, Bob McGear, Del Parton, Ted Rosaro, AC Robinson, and Michael Wong** cleared out years of accumulation and took it to the recycle center for cash. Their efforts added \$800 to PCC's finances.

That's the good news. The bad news is that the Clubhouse is temporarily homeless. We are working on a temporary

location from which the refurbishing activities can continue, but we are still seeking a larger facility from which the Clubhouse's full set of activities can continue. We are setting up a contact phone number where you can call and find out about Clubhouse progress.

If you know of a facility that can house our Clubhouse, (think of the old Clubhouse for size) contact anyone on the Executive Committee and let them know. Contact information for the E.C. is on page 2 of this Newsletter, or go to [www.pcc.org](http://www.pcc.org) and click on Contact Us.

# Free Up Hard Drive Space

Copyright by Sandhills Publishing Company 2011. All rights reserved. Visit <http://www.smartcomputing.com>



Free up space by backing up some of your larger personal files to disc and then deleting the data from your PC.

---

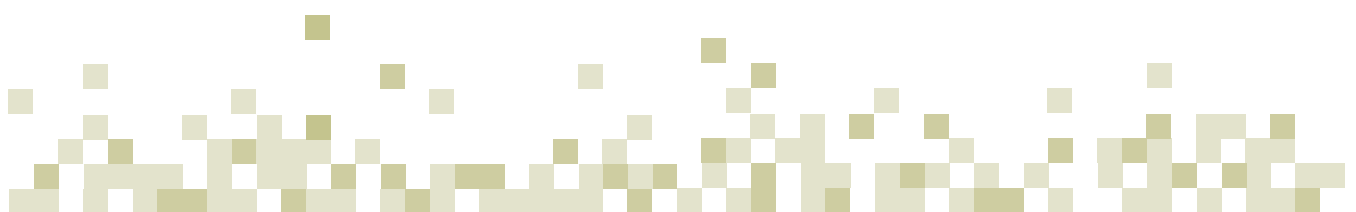
**C**omputer applications and operating systems can be messy creatures. Each time you start them, they leave behind a few small files that are a partial record of the work you've done. The leftover files allow the operating system to reference the data to deliver faster performance the next time it performs the same task. In addition, your PC's storage devices

are also likely cluttered with "temporary" files that are created during a program's installation or removal process. When these orphaned files begin to accumulate, you'll have less storage space than you used to. Even worse, those junk files can slow down a hard drive (but not an SSD, or solid state drive), because it will become more difficult for a hard drive to locate specific data

requested by your computer. Here, we'll cover the maintenance tasks you can perform to clean up a PC's hard drive or SSD.

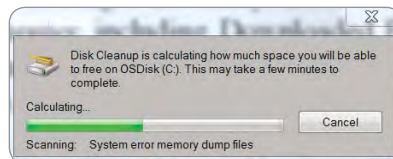
## Disk Cleanup

This is a utility that's built into virtually all of Windows editions since XP, and it's designed to help you get rid of files that are likely no longer necessary. Disk Cleanup



searches the common areas where files build up in your computer, including Downloaded Program Files, Temporary Internet Files, and the Recycle Bin. To run Disk Cleanup in Windows 7, type Disk Cleanup into the Search field, and select Disk Cleanup. Windows 7 will then analyze the files on your PC and let you select the files you want to delete. Select the types of file you want to remove and click the OK button; this brings up a window that asks Are You Sure You Want To Permanently Delete These Files? Click Delete Files to finish the process.

For those running Windows 8, you can type Disk Cleanup and select it from the Search options. The utility will scan the drive and generate a Files To Do Delete list, which is a categorized inventory of the junk files



Disk Cleanup starts by scanning your PC to see how much space it can save you.

on your PC. To select or deselect a category, click the checkbox next to the listed option. Once you've selected all the files you want to remove, click OK. Then, select Delete Files from the Disk Cleanup window.

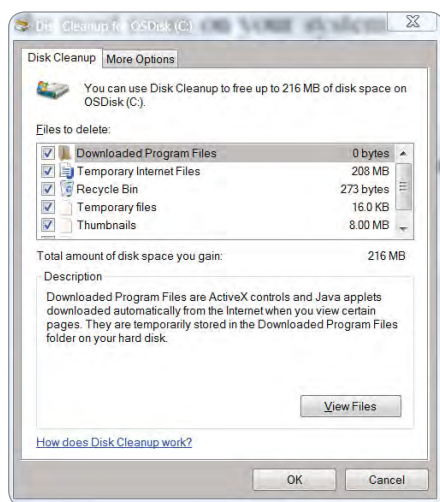
## Uninstall Programs

In a bind for storage space on a PC? One of the easiest ways to free up capacity is by uninstalling applications you no longer use. To see a list of applications on your computer in Windows 7, click the Start button, select Control Panel, and choose Uninstall A Program under the Pro-

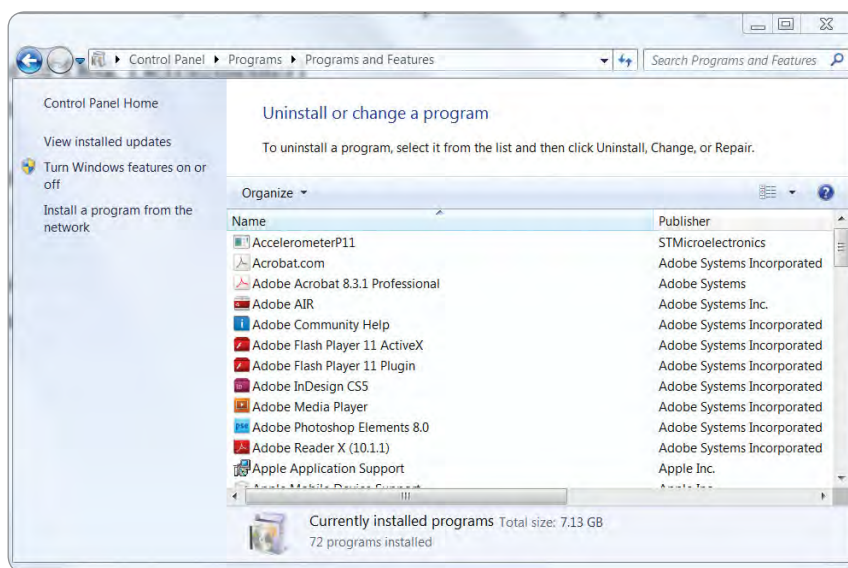
grams section. Scroll through the list of application to see if there are any programs that you can delete to free up space. When you find one, select it and click the Uninstall button.

There are two ways to remove applications in Windows 8. For programs that run in the Modern UI, right-click the application you want to delete and a check will appear on it. Select the Uninstall option at the bottom of the screen. For applications that operate in the Windows Explorer view, open Windows Explorer, select Computer, and ensure the ribbon is maximized. Next, se-

*Continued on page 6*



Once it finishes scanning, Disk Cleanup will break down the files into categories, so you can quickly select what you want to delete.



You can quickly gain storage space by uninstalling programs that you no longer use.

Continued from page 5

Sort through your emails and get rid of those with extra-large attachments, if you no longer need the data.



lect Open Control Panel from the File menu and choose Uninstall A Program. Choose the application you want to delete, and click the Uninstall/Change button.

### Back Up & Remove Old Files

Do you have a large collection of digital images to which you no longer need regular access? If your personal files are taking up too much space on your PC, consider investing in an external hard drive, and then transfer that data to the external drive as a convenient backup that you can access whenever you need to open the files. If your computer features a DVD or Blu-ray burner, you could also burn the files to disc. You may

even want to back up your most treasured files to both an external hard drive *and* disc, so you'll have a backup copy even if the other gets lost or fails. Once you've backed up the data, you can then delete it from your PC's hard drive—knowing that the data is safely stored on the external hard drive or disc.

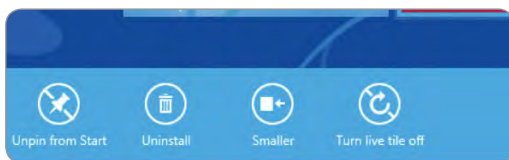
### Delete Duplicate Files

Over the years, you may have downloaded or created multiples of many files on your computer. For example, we recently found a large collection of duplicate images that we'd copied into a folder on our Desktop, so we could easily transfer them to a flash drive. The 20MB folder no longer served any purpose,

but we'd forgotten to delete the duplicate copy after transferring the data. Examine your PC's folders for extra copies that may be occupying valuable hard drive space. Some third-party utilities will find and list duplicate files for you.

### Email Attachments

If your friends, colleagues, and clients send you emails with large attachments that you save elsewhere, it may no longer be necessary to save the original emails—or at least not the attachments that accompanied them. Most email clients offer a way to sort your emails by size, so you can quickly determine which ones are taking up the most room on your system. ●



In Windows 8's Modern UI, you can uninstall an application by right-clicking it and selecting the Uninstall option at the bottom of the screen.

# Windows Lifecycle

Copyright by Sandhills Publishing Company 2011. All rights reserved. Visit <http://www.smartcomputing.com>

## When To Upgrade Your Operating System

With Windows 8's launch finally upon us, now is a great time to brush up on the lifecycle particulars of Microsoft's current and former operating systems. Microsoft has a 10-year minimum support plan for its operating systems: at least five years of mainstream support and five years of extended support. Now is the time to upgrade, if the operating systems you use are nearing the end of their lifecycle.

### The End Is Nigh

Microsoft's operating systems all have two different expiry dates, End Of Sales and End Of Support. The former refers to the point at which Microsoft stops shipping the particular version of Windows to OEMs (original equipment manufacturers) and retailers. Often, the retail End Of Sales dates occurs before the OEM one. According to Microsoft, you should begin thinking about upgrading if your OS has reached its End Of Sales

date, but as long as your operating system has the latest service pack, you'll still get updates and security fixes.

There are actually two End Of Support dates. The first occurs roughly five years after the operating system's launch. This period is called the mainstream support phase, and during it you can still request changes in product design and features, download free security updates and hotfixes, and get complimentary and paid support. When the mainstream support phase ends, the OS goes into its extended support phase, which eliminates complimentary support and

most hotfixes; however, security updates and paid support will continue until this phase ends. If your OS is in the extended support phase, then you should consider upgrading as soon as possible. ●

| Type of support   | Mainstream support phase | Extended support phase                          | Self-help online support  |
|---|--------------------------|---|---|
| Request to change product design and features   | ✓                        | ✗   | Free access to online content, such as Knowledge Base articles, online product information, and online support Webcasts |
| Security updates  | ✓                        | ✓   |   |
| Other non-security hotfixes   | ✓                        | ☆   |   |
| Complimentary support <sup>1</sup> included with license, licensing program <sup>2</sup> , and other no-charge support programs | ✓                        | ✗   |   |
| Paid support (including pay-per-incident Premier and Essential Support)   | ✓                        | ✓   |   |
| Product category applicability  | Applies to all products  | Applies to business and developer software only | Applies to all products   |

✓ Available
✗ Not available
☆ Available only with purchase of Extended Hotfix Support Agreement

<sup>1</sup> Refers to phone support and online support options.

<sup>2</sup> For example, support incidents acquired through the Software Assurance program for server products.

Once in the extended support phase, your OS is no longer current and you will be unable to apply most hotfixes.

## End Of Support Dates For Windows OSes

The End Of Support dates are important factors to consider when you're determining when to upgrade. Use this chart to determine if your OS is getting long in the tooth.

|               | End Of Mainstream Support | End Of Extended Support |
|---------------|---------------------------|-------------------------|
| Windows XP    | 4/14/2009                 | 4/8/2014                |
| Windows Vista | 4/10/2012                 | 4/11/2017               |
| Windows 7     | 1/12/2015                 | 1/14/2020               |
| Windows 8     | To Be Determined          | To Be Determined        |

## Door Prizes

Congratulations to all the members who won door prizes at the Main Meeting!

**General Drawing:**

|   |                  |
|---|------------------|
| Actiontec keyring.....                        | Michael Wong     |
| Amplidata tee shirt.....                      | Lola Hunter      |
| Avast! Lanyard.....                           | Paul Rogers      |
| Avast! Cap.....                               | Dan Peterson     |
| Avast! Screen cleaner.....                    | Joy Somerville   |
| California Mentor flashlight.....             | George Kornbluth |
| PerfectPath HDMI cable.....                   | Ron Seipel       |
| Poynt tee shirt .....                         | Bayle Emlein     |
| Poynt tee shirt .....                         | Judy Rogers      |
| United Health Group pedometer.....            | Yorkman Lowe     |
| Windows 7 Inside Out from O'Reilly Media..... | Don Odle         |
| How to Play Harmonica Software .....          | Sally Holt       |

**Raffle Prize:**

|                                |              |
|--------------------------------|--------------|
| Pandigital novel eReader ..... | Bayle Emlein |
|--------------------------------|--------------|

### Door Prize Donations

O'Reilly Media generously donates the books for our door prizes. Go to [www.oreilly.com](http://www.oreilly.com) and pick books you'd like to see on our door prize table. E-mail the names and ISBN of the books you want me to request.

Elsie Smith  
lcms@pacbell.net

**dominique**  
& co.

HAIR SALON



510.782.7014  
20500 C Hesperian Blvd.  
Hayward, CA 94541

Family and Cosmetic Dentistry  
[www.mycastrovalleydentist.com](http://www.mycastrovalleydentist.com)

Timothy Bennett D.D.S.  
3209 Castro Valley Blvd. Suite #1  
Castro Valley, CA 94546  
Phone (510) 881-0620  
*Naturally Beautiful Smiles*  
[tbennettdentistry@yahoo.com](mailto:tbennettdentistry@yahoo.com)



### CARING PET HOSPITAL



SARUP S. MANGAT, D.V.M.  
605 Greeley Court  
Hayward, CA 94544

Office Hours:  
Mon.-Wed. 8:30 am-6 pm  
Thurs.-Fri. 8 am-6 pm  
Sat. 9 am-2 pm

Telephone: (510) 537-1788  
Fax: (510) 537-3103

[www.caringpethospital.net](http://www.caringpethospital.net)

### Membership Dues

|                                      |          |
|--------------------------------------|----------|
| Regular.....                         | \$35.00  |
| Family (same household).....         | \$45.00  |
| Educational, Seniors.....            | \$20.00  |
| Corporate (maximum 5 memberships)... | \$100.00 |

Make a check payable to PC Community in the amount listed above to:  
PC Community  
P.O. Box 55513  
Hayward, CA 94545-0513

### Dues Expiring This Month!

The following members dues expire this month:

**Dan Dolgin**  
**Richard Fitzgerald**  
**Rodney Harris**  
**Bob McGeary**  
**Thomas F. Smith**



# Special Interest Group Meetings



*Del Parton - retired the Hardware SIG. Del's Hardware SIG, now 27 years old, is the oldest SIG and has been held continually since the inception of PCC. Del thanked the Smiths at the September Main Meeting for hosting the SIG in their house for the past 13 years.*



**Dan Dolgin** - (510) 895-8845  
dandolgin7@comcast.net  
3rd Monday of the month: 7:30pm  
<http://www.pcc.org/mobile>



**David Graham** - (925) 997-9646  
dmgraham98@yahoo.com  
3rd Monday of the month: 7:30pm  
<http://www.pcc.org/mobile>

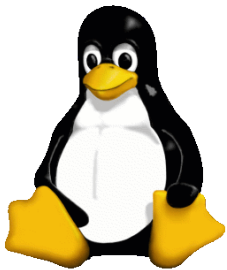


**Bud Gallagher** - (510) 269-3623  
budgall@comcast.net  
2nd Saturday of the month: 1pm

Room for more  
SIGs here-  
start one!



**Jan Fagerholm** - (510) 213-8421  
pcc4me@gmail.com  
Last Saturday of the Month: 2pm



## The Penguin Partition Linux for Human Beings

by Jan Fagerholm, PCC Penguinista

If I say “Linux”. you probably have a shape in mind. (No, penguin-shaped doesn't count.) I'm speaking of the ways and places you encounter Linux that you may not even be aware of.

Part of my personal penguinista project is, of course, desktop Linux, where it all started. In the progression of personal devices, I have adopted it on my laptop, my netbook, and my favorite note-taker the OLPC (One Laptop Pre Child) XO-1 machine. In addition to the touted Sugar interface, the X) machine boasts the ability to switch between the Sugar interface and a traditional Fedora desktop.

I've mentioned previously how embedded Linux is used in so many of our faceless appliances, but more recently it has become dominant with a different face in the most recent personal devices, smartphones and tablet computers. I'm speaking, of course, of Android.

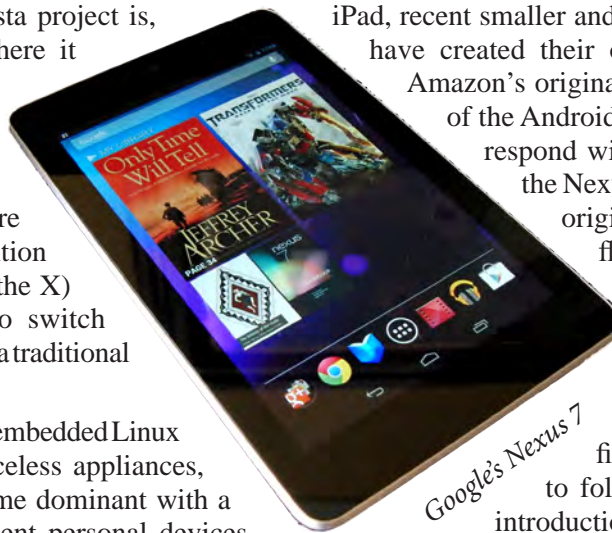
We are accustomed to hearing about the iPhone's dominance in smartphones, but that is only in the U.S. Worldwide, Android smartphones outnumber iPhones, which accounts for Apple's nervousness (and recent court actions) against manufacturers of Android phones.

On the tablet computer front, Apple had a two year lead in the tablet market, but Google's development of Android on Linux has inspired a proliferation of devices that appeal to personalization on many more levels.

Where the first Android tablets were clear clones of the iPad, recent smaller and less expensive Android tablets have created their own market. Most obvious is Amazon's original Kindle Fire, but their forking of the Android platform has caused Google to respond with its own “pure” small tablet, the Nexus. At one-fourth the price of the original iPad, it, and its many kin, are flying off the shelves faster than they can be made. Android 4.1 (Jellybean) helps the experience by incorporating code optimization rather than feature creep. For the first time, Apple has been forced to follow, rather than lead, with the introduction of the iPad Mini.

Behind all this frenzy is the new nVidia Tegra 3 CPU/VPU, which has substantial improvements in performance and power management over previous CPUs. These devices are also finding their way into the latest netbooks and laptops, creating a cross-platform experience not previously available.

Oh, yeah, and of course it all runs on Linux.



Google's Nexus 7



# PCC Main and Executive Meeting Highlights



Secretary — Bayle Emlein  
pcc@ix.netcom.com

Treasurer — Tom Smith  
smith-tf@pacbell.net

## Main Meeting Highlights

### October 5, 2012

The meeting was called to order at 7:31 p.m. by President Chuck Horner. At the ticket table, see Lola Hunter for raffle tickets, door prize tickets, and 3" x 5" cards to write questions for discussion/answers at the end of the Meeting. Get at least one \$5 raffle ticket for this month's raffle prize, a Pandigital eReader.

Chuck opened nominations for the Board of Directors election. Nominated this month: Chuck Horner, Sally Holt, Jan Fagerholm, Bayle Emlein, Bud Gallagher, Elsie Smith.

Additional nominations can be sent to PCC officers via the Web site and will also be taken next month and at the December meeting before the election. The election will be conducted during the December meeting.

We need folks willing to help out coordinating programs and with publicity.

### SIG Announcements:

The Windows 7 SIG will meet October 13 at Bud Gallagher's. Verne Perry will conduct a presentation. The following month will probably cover the Microsoft Surface tablet. If there is a Windows 8 SIG, it will NOT be led by Bud. Windows 8 makes sense only on a tablet or touchscreen.

The Spectacular Linux SIG looked at the Nexus tablet and KDE last time. Stay tuned to your email box to see what new and interesting topics will appear by the end of October. The Linux SIG will meet as usual on the last Saturday of the month, starting at 2:00 p.m. In October that will be the 27th.

The Mobile SIG will meet on the 3rd Monday.

Elsie reminded us that the Hardware SIG has retired.

**Presentations:** Bob Gostischa from Avast! started his presentation by reviewing the basics: When you get a notice to update, assume it means that there was a security breach and act on it at your earliest opportunity. But do not click on buttons that claim to be a company you know. The Bad Guys have gotten very clever at imitating familiar, well-known sites.

Initiate contact yourself, via phone or email.

The basic summarized:

- » Update, don't wait
- » Don't be click happy
- » Passwords: make them strong, don't share, use a different one for each service
- » Gamers: keep security software on
- » Avoid P2P (peer to peer) and pirated software
- » Social engineering attacks are rampant
- » Not everyone is your friend
- » Public WiFi hotspots are public, don't bank or shop at Starbucks.

There are currently 2.1 billion internet users. With increasing use, risk increases. 85% of infections come directly from the internet. The other 15% come from removable media, email. Six out of 10 infections come from legitimate sites that have become compromised. Avast! will block customer access to infected Web sites. Avast! uses 10% of a computer's operating resources needed by Symantec, while finding threats and distributing cures faster. Avast! is now the leading anti-virus software, free or paid, worldwide.

New from Avast!: Android and smartphone protection. Avast also has a version for Mac and Linux, but no iPhone/Pod/Pad as of tonight's meeting.

Free versions of Avast! are for home user. Corporate users buy the Endpoint Protection Suite. Bob recommends the Internet version, which is more inclusive and worth the small additional cost.

Bob will be sending a file with links to information he presented. Check the PCC Website for the links.

Thank you to George Kornbluth for taking care of refreshments.

The meeting was adjourned at 9:49 p.m.

Respectfully submitted,  
Bayle Emlein, Secretary

---

## ***Executive Committee Meeting Highlights***

### **October 20, 2012**

The meeting was called to order at 2:43 p.m. by President Chuck Horner.

Members present: Bayle Emlein, Jan Fagerholm, Sid Jordan, Elsie Smith, Tom Smith. Absent: Diane George.

The minutes of the September 2012 meeting were approved.

#### **Old Business:**

Board of Directors Nominees: Chuck Horner, Sally Holt, Jan Fagerholm, Bayle Emlein, Elsie Smith, Bud Gallagher, Don Odle.

**President's Report** - Chuck Horner: Chuck discussed the need for a permanent, publicly accessible Clubhouse space. He will pursue reinstating access to the previous space at Hayward Adult School.

Sally reports that a meeting is planned to discuss proposed use of Kennedy Park is scheduled for November 14. There is potential for a Clubhouse as this space is developed. Chuck will follow up.

Clubhouse Crew participants do not maintain current membership in PCC.

**Executive Vice President** – Sally Holt: Nothing special to report.

**Treasurer** - Tom Smith: As of October 20, 2012:

Checking Account      \$1,179.83

**Secretary** - Bayle Emlein: Nothing special to report.

**VP Clubhouse** - Sid Jordan: See President's Report.

**VP Marketing** – Position open:

**VP Membership** - Jan Fagerholm: Member count as of October 20, 2012.

| Type      | Number | Percentage |
|-----------|--------|------------|
| Regular   | 19     | 46.34 %    |
| Senior    | 19     | 46.34 %    |
| Student   | 2      | 4.88 %     |
| Associate | 1      | 2.44 %     |
| Total     | 41     |            |

The membership is dwindling, consequently PCC is running out of money. We need to have a serious discussion about the future of PCC. The original purpose of PCC has been superseded as technology becomes more accessible to a wider population.

**VP Newsletter** - Elsie Smith: Newsletter Deadline:

October 20, 2012, Midnight, November Newsletter  
November 17, 2012, Midnight, December Newsletter  
December 22, 2012, Midnight, October Newsletter

**VP Special Projects** - Bayle Emlein: Nothing special to report.

**Webmaster** - Diane George: Nothing special to report.

Calendar: See the Web site for the latest updates and changes in SIG meetings.

#### **Programs -**

November: PCC Future Q&A

December: Abby Stokes

Fund Raiser:

November: Corsair 32 GB 3.0 flash drive

December: His (PNY 16 GB) and Hers (Crystal Heart 8 GB) Jewelry flash drives.

#### **New Business: None**

Date and Time of Next Meeting: Saturday, November 17, 2012 at 2:00 p.m., 28924 Ruus Road, Hayward.

The meeting was adjourned at 3:39 p.m.

Respectfully submitted,

Bayle Emlein, Secretary

---

## ***PCC Elections Loom Large For December***

Each Fall, PC Community (PCC) begins to make noise to the membership about upcoming elections. This is what it's all about. PCC operates as a California corporation under 501(c)(3), which sets forth the rules for non-profit corporations. These rules include a structure requirement for a Board of Directors and an Executive Committee consisting of (at least) a President, a Treasurer, and a Secretary. PCC's Articles of Incorporation state that we will hold annual elections for the Board of Directors. We have five (5) Board members. PCC members are the voting members of our corporation. PCC members elect the Board of Directors, who in turn select the Executive Committee. The Board of Directors oversees the Executive Committee (E.C.), The E.C. conducts the day-to-day business of PCC. PCC members nominate the persons to be eligible for election to the Board of Directors. Nominations may take place at the Main Meeting, and may also be submitted by e-mail to the Executive Committee (<http://www.pcc.org/index.php/contact-us>). Nominations normally take place from October until the December Main Meeting. Elections are held at the December Main Meeting. Any questions about these procedures can be directed to the E.C. at <http://www.pcc.org/index.php/contact-us>.

PC Community  
 P.O. Box 55513  
 Hayward, CA 94545-0513



Happy Thanksgiving

# November 2012

| Sunday   | Monday | Tuesday                                 | Wednesday                                    | Thursday | Friday                              | Saturday                        |
|--|--------|---|--|----------|-------------------------------------|---------------------------------|
| Check the calendar at <a href="http://www.pcc.org">www.pcc.org</a> for up-to-date information! |        | See Page 9 for SIG Meeting information. |  | 1        | 2<br>7:30 pm<br><b>Main Meeting</b> | 3                               |
| 4  | 5      | 6                                       | 7  | 8        | 9                                   | 10<br>1 pm-Windows 7 SIG        |
|  |        | 12                                      | 13   | 14       | 15                                  | 16<br>2 pm-Exec. Committee Mtg. |
|  |        | 18                                      | 19<br>7:30 pm-<br>Mobile<br>Computing<br>SIG | 20       | 21<br><br>Thanksgiving Day          | 23                              |
| 25   | 26     | 27                                      | 28   | 29       | 30                                  |                                 |

The **December 2012 Main Meeting** will be at 28924 Ruus Road, Hayward CA, on **December 7, 2012** at 7:30 P.M.